

Overview of the industrial multipole connector range **revos**

Contact inserts:

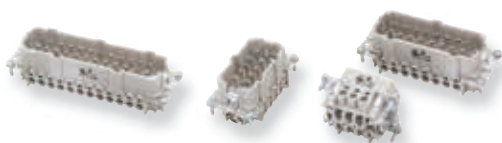
revos MINI



The contact inserts for the **revos** MINI connector series are very compact and available with 3 to 12 poles.

You will find the contact inserts for the **revos** MINI connectors on pages 28–31.

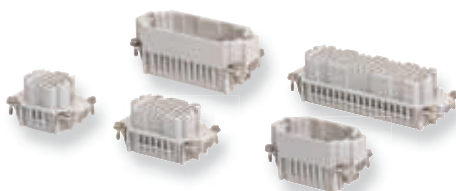
revos BASIC



The proven connectors and multipole adapters are available in 6 to 92 pole design with screw, spring clamp and crimp connection technology.

You will find **revos** BASIC contact inserts on pages 32–57; You can find terminal block adapters and inserts with integral cable strain relief on pages 78–91.

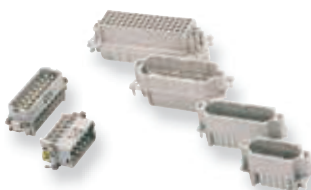
revos DD



High contact density in the most compact space – this is what the space-saving contact inserts of **revos** DD offer. The inserts fit into the BASIC housing sizes 6/6H, 10/10H, 16/16H, 24/24H. Connection is made with the proven turned crimp contacts, with a diameter of Ø 1.6 mm, which offer a connection range from 0.14 to 2.5 mm² at a rated voltage of 250 V (600 V CSA/UL).

You will find **revos** DD contact inserts on pages 58–59.

revos HD



Contact inserts and multipole adapters with 15 to 64 poles and for currents up to 10 A designed according to DIN EN 175301-801 (previously DIN 46352). The contact inserts are designed in crimp connection technology.

You will find **revos** HD contact inserts on pages 60–67 and terminal block adapters on pages 92–95.

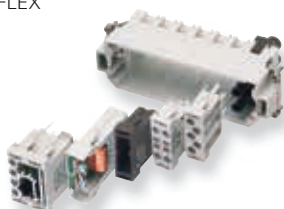
revos POWER



The contact inserts and multipole adapters are designed for >16 A currents; they are also available with mixed contacts and screw connection.

You will find **revos** POWER contact inserts and terminal block adapters on pages 68–77.

revos FLEX



The modular system for the economical and clever mixture of contact inserts. With this flexible system you can customize your connector, to meet the requirements of your application.

You will find **revos** FLEX contact inserts on pages 100–113.

Housing families:

revos MINI

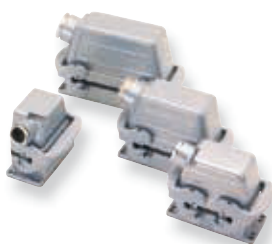


The design of the housings for the connectors of **revos** MINI is very compact and available in two materials:

- Die cast zinc alloy
- Polyamide

You will find **revos** MINI-housings on pages 118–119.

revos BASIC



PG
threads
are available
on request!

The housing of the BASIC series are available in size 6 to 48. For convenient connection of the cables this series is also available with enlarged cable entry in increased height design in sizes 6H–24H. The housings are made of die cast aluminum with, silicon-free finish.

You will find **revos** BASIC-housings on pages 120–223.

revos HD



PG
threads
are available
on request!

The housings of the HD series are available in size 10/15 to 32/50.

You will find **revos** HD-housings on pages 224–237.

Special multipole connector designs:

revos Ex



revos Ex multipole connectors are designed for special applications in hazardous areas. Their use in zone 1 for intrinsic circuits has been approved by the BVS test institute. The housings for the multipole connectors are manufactured from die cast zinc alloy.

You will find **revos** Ex-contact inserts on pages 98–99.

You will find **revos** Ex-housings on pages 238–257.

Operating instructions for Ex plug connectors, see facts&DATA.

revos IT



Data cable feed-throughs – the ideal solution for the installation of pre-assembled cables to enclosures. Sealed and with strain relief. Inserts with D-Sub connectors 9 to 100 pole.

You will find **revos** IT products on pages 96–97.

revos MOT



revos MOT plug connectors with plastic housings, simple and easy handling due to its unique latching system.

You will find **revos** MOT products on pages 114–115.