

250 V contact inserts, with crimp connection

Description	Type	Part No.	P.U.
Contact inserts revos^{DD} 250 V			
24-pole + ground			
Male insert	DD STC 24 1.5 25	73.810.2453.0	10
Female insert	DD BUC 24 1.5 25	73.800.2453.0	10
Contact inserts revos^{DD} 250 V			
42-pole + ground			
Male insert	DD STC 42 1.5 25	73.810.4253.0	10
Female insert	DD BUC 42 1.5 25	73.800.4253.0	10
Contact inserts revos^{DD} 250 V			
72-pole + ground			
Male insert	DD STC 72 1.5 25	73.810.7253.0	10
Female insert	DD BUC 72 1.5 25	73.800.7253.0	10
Contact inserts revos^{DD} 250 V			
108-pole + ground			
Male insert	DD STC 108 1.5 25	73.810.0853.0	10
Female insert	DD BUC 108 1.5 25	73.800.0853.0	10
Contacts for crimp connection			
	mm ² / AWG		
Male insert	0.14 – 0.37 / 20	05.544.4129.8	200
Female insert	0.14 – 0.37 / 20	02.125.4129.8	200
Male insert	0.5 / 20	05.544.4229.8	200
Female insert	0.5 / 20	02.125.4229.8	200
Male insert	0.75 – 1 / 18	05.544.4329.8	200
Female insert	0.75 – 1 / 18	02.125.4329.8	200
Male insert	1.5 / 16	05.544.4429.8	200
Female insert	1.5 / 16	02.125.4429.8	200
Male insert	2.5 / 14	05.544.4529.8	200
Female insert	2.5 / 14	02.125.4529.8	200
Technical data			
Rated voltage	250 V		
Rated voltage according to UL/CSA	600 V AC (CSA)		
Rated impulse voltage	2.5 kV		
Rated current	10 A		
Degree of pollution	2 (3 in Housing with IP54 and higher)		
Rated cross section			
EN 60999	0.14 – 2.5 mm ²		
UL	26 – 14 AWG		
CSA	26 – 14 AWG		
Contacts			
Material	Copper alloy		
Surface	Sn, Ag, Au		
Insulation strip length	8 mm		
Contact resistance	< 5 mΩ		
Mating cycles	Ag, Au 500		
Screws head design / recomm. torque			
Mounting screws	Z1 / 0.5 – 0.7 Nm		
Clamping screws	-		
Ground conductor screws	Z2 / 1.2 Nm		
Temperature range	-40 – +120 °C		
Description	Type	Part No.	P.U.
Accessories			
Crimping tool		95.101.0800.0	1
Crimping die	"E"	05.502.2400.0	1
Contact positioner	"2"	05.502.3200.0	1
Extraction tool		05.502.0000.0	1
Housing 500 V			
Size	6/6H	Page 120–127	
Size	10/10H	Page 132–149	
Size	16/16H	Page 160–177	
Size	24/24H	Page 188–205	

Contact inserts revos^{DD}



**24-pole + ground
Size 6/6H**



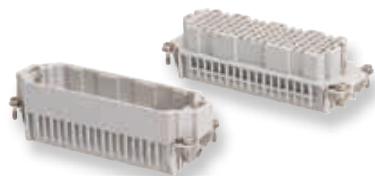
**42-pole + ground
Size 10/10H**



**72-pole + ground
Size 16/16H**

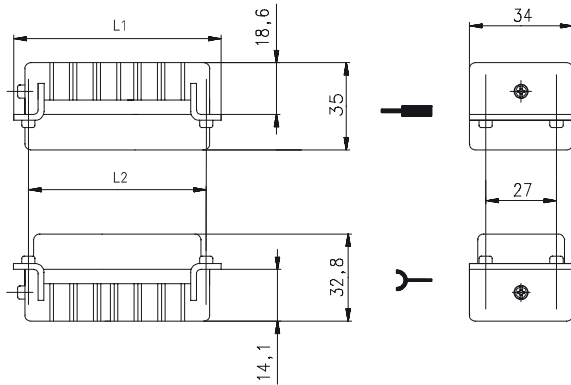


**108-pole + ground
Size 24/24H**



Dimensions

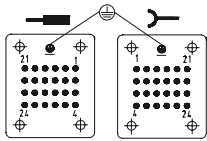
24-pole + ground – 108-pole + ground



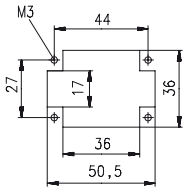
Number of poles	L1 [mm]	L2 [mm]
24	50.5	44.0
42	63.5	57.0
72	84	77.5
108	110.5	104.0

24-pole + ground

Connection side

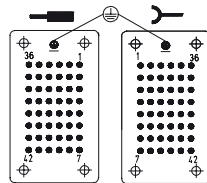


Cut-out

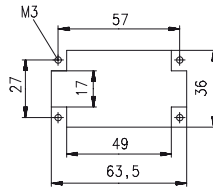


42-pole + ground

Connection side

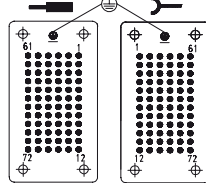


Cut-out

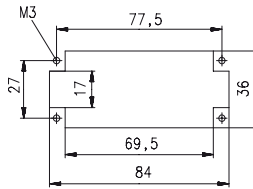


72-pole + ground

Connection side

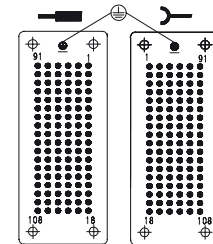


Cut-out

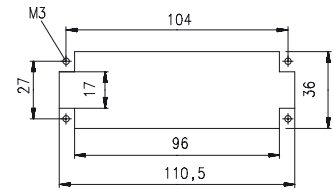


108-pole + ground

Connection side

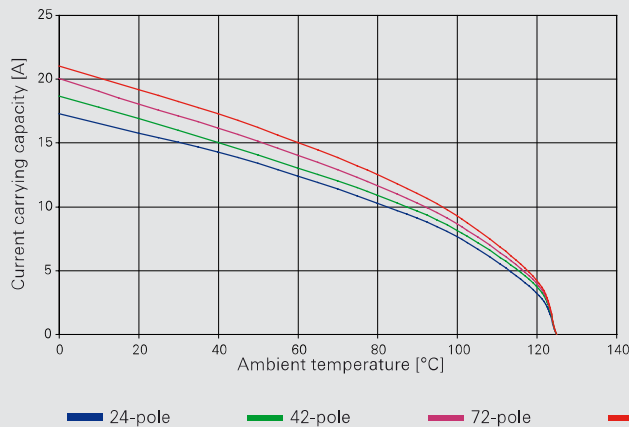


Cut-out



Derating curve according to IEC 60512 sec. 3

revos_{DD} 250V / 10 A / 1.5 mm²



Derating curve according to IEC 60512 sec. 3

revos_{DD} 250V / 16 A / 2.5 mm²

