



# 250 V contact inserts, screw connection

## Contact inserts *revos* HD



### 10-pole + ground Size 10/15



### 16-pole + ground Size 16/25, 32/50



### 32-pole + ground Size 32/50



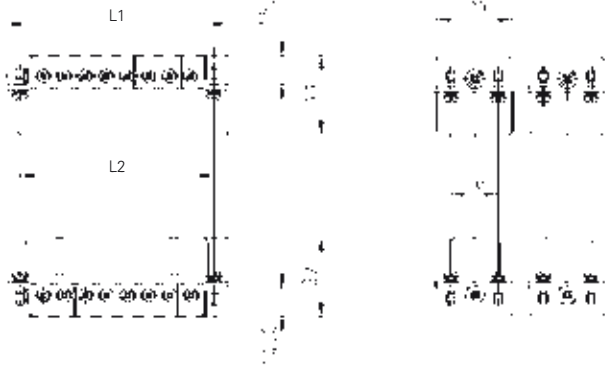
Description	Type	Part No.	P.U.
<b>Contact inserts <i>revos</i> HD 250 V</b>			
<b>10-pole + ground</b>			
Male insert	HD STS 10 2.5 25 AG	73.310.1053.0	10
Female insert	HD BUS 10 2.5 25 AG	73.300.1053.0	10
<b>Contact inserts <i>revos</i> HD 250 V</b>			
<b>16-pole + ground</b>			
Male insert	HD STS 16 2.5 25 AG	73.310.1653.0	10
Female insert	HD BUS 16 2.5 25 AG	73.300.1653.0	10
Male insert, marked 17-32	HD STS SB 16 2.5 25 AG	73.310.1653.3	10
Female insert, marked 17-32	HD BUS SB 16 2.5 25 AG	73.300.1653.3	10
<b>Contact inserts <i>revos</i> HD 250 V</b>			
<b>32-pole + ground</b>			
Male insert, marked 1-16, marked 17-32	HD STS 32 2.5 25 AG	73.310.3253.0	5
Female insert, marked 1-16, marked 17-32	HD BUS 32 2.5 25 AG	73.300.3253.0	5
<b>Technical data</b>			
Rated voltage	250 V		
Rated voltage according to UL/CSA	600 V		
Rated impulse voltage	4 kV		
Rated current	VDE 16 A / CSA 16 A / UL 14 A		
Degree of pollution	3		
<b>Rated cross section</b>			
EN 60999	e* 0.5 – 1.5 mm <sup>2</sup> /f** 0.75 – 2.5 mm <sup>2</sup>		
UL	20 – 14 AWG		
CSA	20 – 14 AWG		
<b>Contacts</b>			
Material	Copper alloy		
Surface	Ag		
Insulation strip length	7 mm		
Contact resistance	≤ 4 mΩ		
Mating cycles	100		
<b>Screws</b> head design / recomm. torque			
Mounting screws	Z1 / 0.5 Nm		
Clamping screws	Z1 / 0.5 Nm		
Ground conductor screws	Z2 / 1.2 Nm		
Temperature range	-40 – +120 °C		
<b>Housing 250 V</b>			
Size	10/15	Page 224–227	
Size	16/25	Page 228–231	
Size	32/50	Page 232–237	

\* Solid

\*\* Fine stranded

# Dimensions

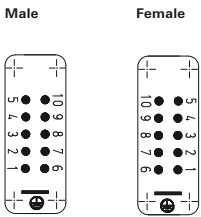
## 10-pole + ground – 32-pole + ground



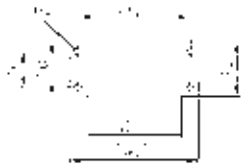
Number of poles	L1 [mm]	L2 [mm]
10	56.5	49.5
16	73.0	66.0
32	73.0	66.0

### 10-pole + ground

#### Connection side

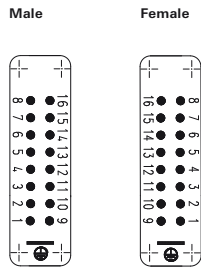


#### Cut-out

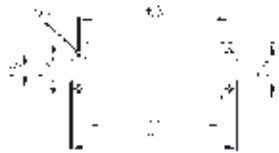


### 16-pole + ground

#### Connection side

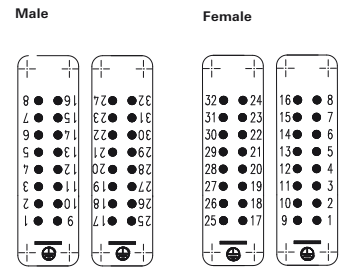


#### Cut-out

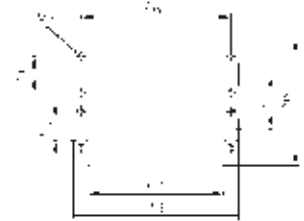


### 32-pole + ground

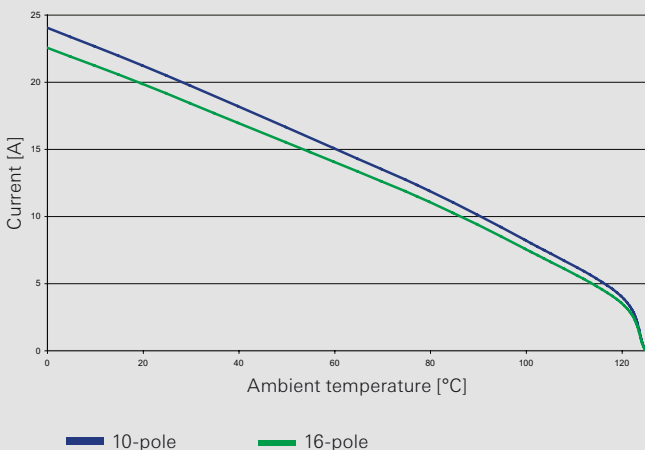
#### Connection side



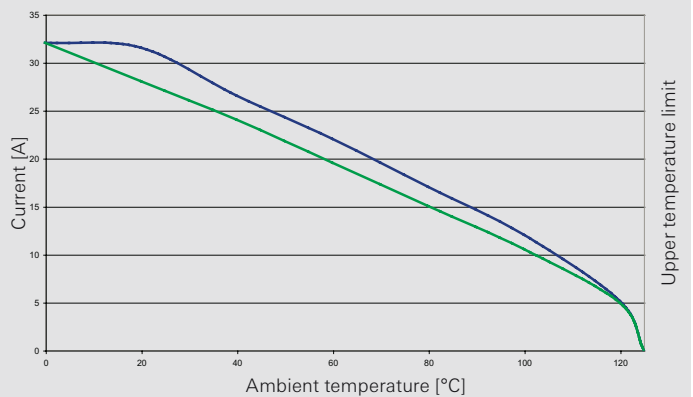
#### Cut-out

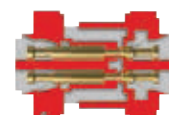


**Derating curve** according to IEC 60512 sec. 3  
 revos HD 10/16 250 V / 16 A / 1.5 mm<sup>2</sup>



**Derating curve** according to IEC 60512 sec. 3  
 revos HD 10/16 250 V / 16 A / 2.5 mm<sup>2</sup>





# 250 V contact inserts, with crimp connection

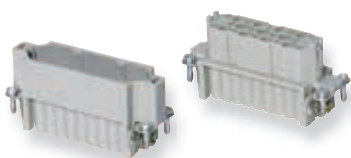
## Contact inserts *revos*<sup>HD</sup>



### 15-pole + ground Size 10/15



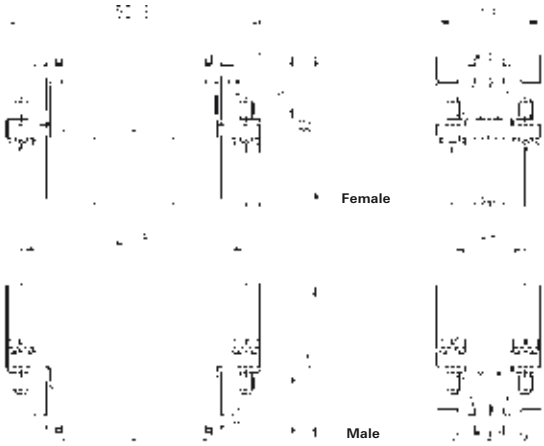
### 25-pole + ground Size 16/25, 32/50



Description	Type	Part No.	P.U.
<b>Contact inserts <i>revos</i><sup>HD</sup> 250 V</b>			
<b>15-pole + ground</b>			
Male insert	HD STC 15 25	73.710.1553.0	10
Female insert	HD BUC 15 25	73.700.1553.0	10
<b>Contact inserts <i>revos</i><sup>HD</sup> 250 V</b>			
<b>25-pole + ground</b>			
Male insert	HD STC 25 25	73.710.2553.0	10
Female insert	HD BUC 25 25	73.700.2553.0	10
<b>Contacts for crimp connection</b>			
	mm <sup>2</sup> / AWG		
Male reel contacts, Sn	0.2 – 0.56 / 24 – 20	05.544.0900.0	5000
Female reel contacts, Sn	0.2 – 0.56 / 24 – 20	02.124.0900.0	5000
Male reel contacts, Sn	0.75 – 1.5 / 18 – 16	05.544.1000.0	5000
Female reel contacts, Sn	0.75 – 1.5 / 18 – 16	02.124.1000.0	5000
Male single contacts, Sn	0.2 – 0.56 / 24 – 20	05.544.0929.0	200
Female single contacts, Sn	0.2 – 0.56 / 24 – 20	02.124.0929.0	200
Male single contacts, Sn	0.75 – 1.5 / 18 – 16	05.544.1029.0	200
Female single contacts, Sn	0.75 – 1.5 / 18 – 16	02.124.1029.0	200
Male reel contacts, Au	0.5 – 1.5 / 20 – 16	05.544.1400.0	5000
Female reel contacts, Au	0.5 – 1.5 / 20 – 16	02.124.1400.0	5000
Male single contacts, Au	0.5 – 1.5 / 20 – 16	05.544.1429.0	200
Female single contacts, Au	0.5 – 1.5 / 20 – 16	02.124.1429.0	200
<b>Technical data</b>			
Rated voltage	250 V		
Rated voltage according to UL/CSA	600 V		
Rated impulse voltage	4 kV		
Rated current	10 A		
Degree of pollution	3		
<b>Rated cross section</b>			
EN 60999	0.2 – 1.5 mm <sup>2</sup>		
UL	24 – 16 AWG		
CSA	24 – 16 AWG		
<b>Contacts</b>			
Material	Copper alloy		
Surface	Au, Sn		
Insulation strip length	4 mm		
Contact resistance	≤ 4 mΩ		
Mating cycles	Au 500 / Sn 50		
<b>Screws</b> head design / recomm. torque			
Mounting screws	H1 / 0.5 – 0.7 Nm		
Clamping screws	-		
Ground conductor screws	M3.5 / 0.8 – 1.0 Nm		
Temperature range	-40 – +120 °C		
Description	Type	Part No.	P.U.
<b>Accessories</b>			
Crimping tool		95.101.0800.0	1
Crimping die	"E"	05.502.2400.0	1
Contact positioner	"2"	05.502.3200.0	1
Extraction tool		05.502.0000.0	1
<b>Housing 250 V</b>			
Size	10/15	Page 224–227	
Size	16/25	Page 228–231	
Size	32/50	Page 232–237	

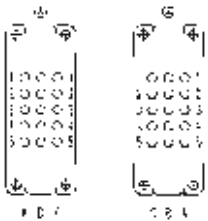
# Dimensions

## 15-pole + ground

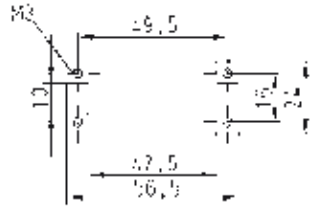


### Connection side

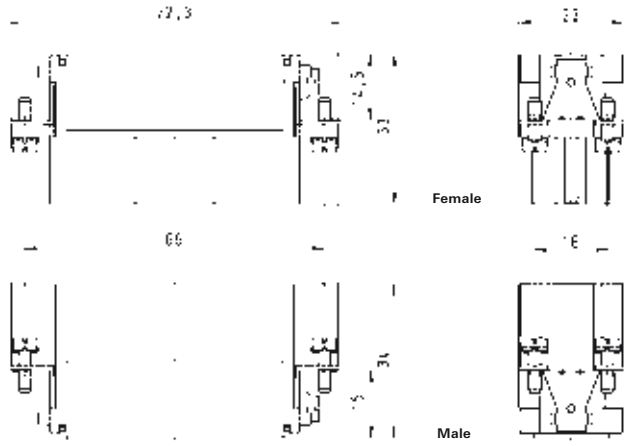
Male Female



### Cut-out



## 25-pole + ground

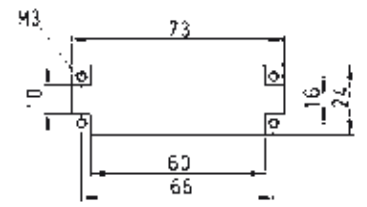


### Connection side

Male Female

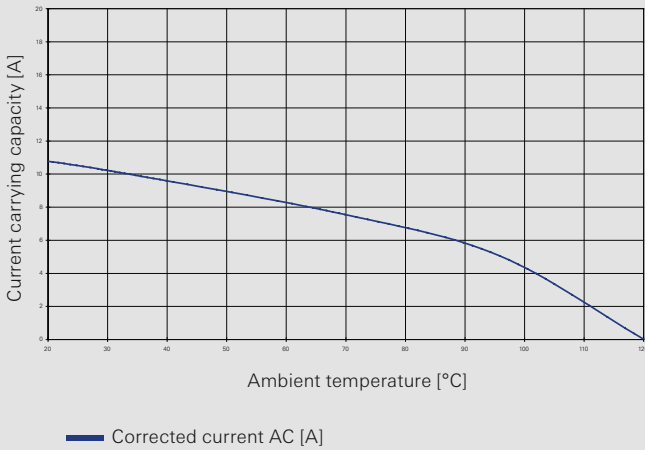


### Cut-out



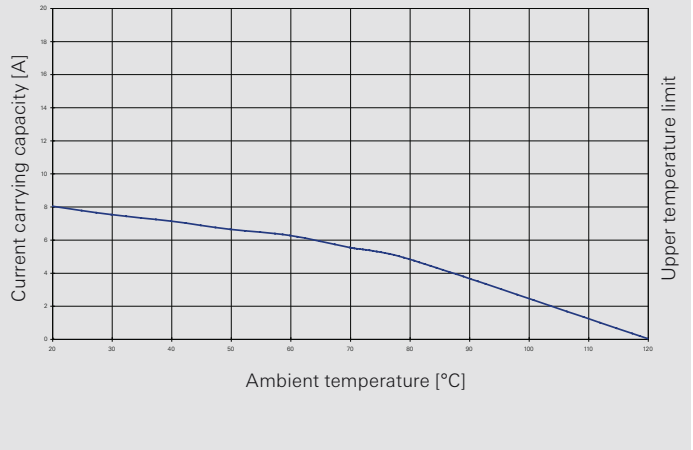
### Derating curve according to IEC 60512 sec. 3

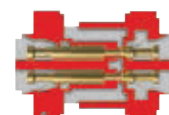
73.700/710.1553.0 **revos<sup>HD</sup>** 15-pole 250 V / 10 A / 1.5 mm<sup>2</sup>



### Derating curve according to IEC 60512 sec. 3

73.700/710.2553.0 **revos<sup>HD</sup>** 25-pole 250 V / 10 A / 1.5 mm<sup>2</sup>



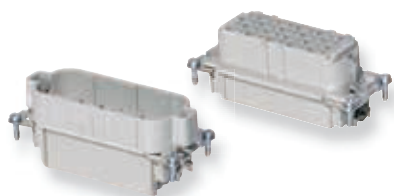


# 250 V contact inserts, with crimp connection

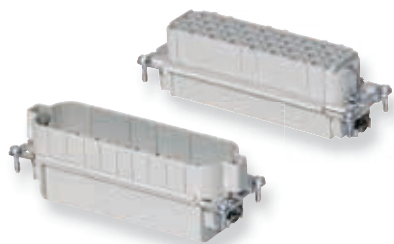
## Contact inserts *revos*<sup>HD</sup>



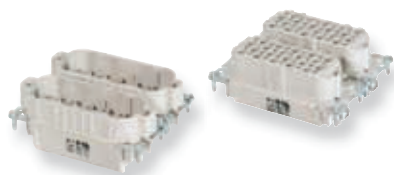
### 40-pole + ground Size 16



### 64-pole + ground Size 24



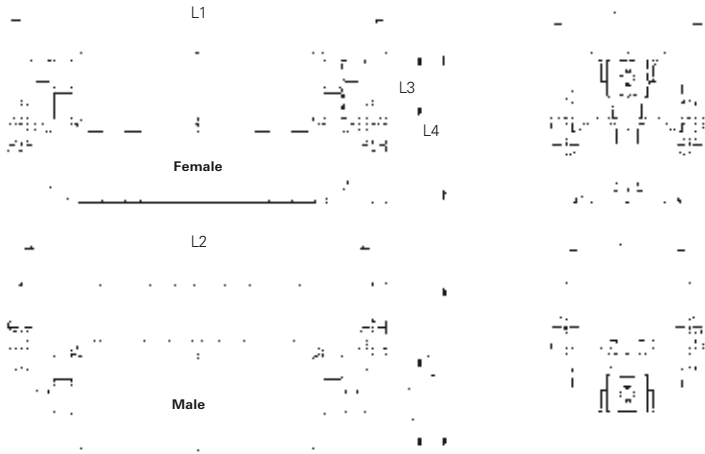
### 80-pole + ground Size 32



Description	Type	Part No.	P.U.
<b>Contact inserts <i>revos</i><sup>HD</sup> 250 V</b>			
<b>40-pole + ground</b>			
Male insert	HD STC 40 25	73.710.4058.0	10
Female insert	HD BUC 40 25	73.700.4058.0	10
<b>Contact inserts <i>revos</i><sup>HD</sup> 250 V</b>			
<b>64-pole + ground</b>			
Male insert	HD STC 64 25	73.710.6458.0	10
Female insert	HD BUC 64 25	73.700.6458.0	10
<b>Contact inserts <i>revos</i><sup>HD</sup> 250 V</b>			
<b>80-pole + ground</b>			
Male insert, marked 1-40, marked 41-80	HD STC 80 25	73.710.8058.0	5
Female insert, marked 1-40, marked 41-80	HD BUC 80 25	73.700.8058.0	5
<b>Contacts for crimp connection</b>			
	mm <sup>2</sup> / AWG		
Male contact Sn, reel	0.2 – 0.56 / 24 – 20	05.544.0900.0	5000
Female contact Sn, reel	0.2 – 0.56 / 24 – 20	02.124.0900.0	5000
Male contact Sn, reel	0.75 – 1.5 / 18 – 16	05.544.1000.0	5000
Female contact Sn, reel	0.75 – 1.5 / 18 – 16	02.124.1000.0	5000
Male contact Sn, single	0.2 – 0.56 / 24 – 20	05.544.0929.0	200
Female contact Sn, single	0.2 – 0.56 / 24 – 20	02.124.0929.0	200
Male contact Sn, single	0.75 – 1.5 / 18 – 16	05.544.1029.0	200
Female contact Sn, single	0.75 – 1.5 / 18 – 16	02.124.1029.0	200
Male contact Au, reel	0.5 – 1.5 / 20 – 16	05.544.1400.0	5000
Female contact Au, reel	0.5 – 1.5 / 20 – 16	02.124.1400.0	5000
Male contact Au, single	0.5 – 1.5 / 20 – 16	05.544.1429.0	200
Female contact Au, single	0.5 – 1.5 / 20 – 16	02.124.1429.0	200
<b>Technical data</b>			
Rated voltage	250 V		
Rated voltage according to UL/CSA	600 V		
Rated impulse voltage	4 kV		
Rated current	10 A		
Degree of pollution	3		
<b>Rated cross section</b>			
EN 60999	0.2 – 1.5 mm <sup>2</sup>		
UL	24 – 16 AWG		
CSA	24 – 16 AWG		
<b>Contacts</b>			
Material	Copper alloy		
Surface	Au, Sn		
Insulation strip length	4 mm		
Contact resistance	≤ 4 mΩ		
Mating cycles	Au 500 / Sn 50		
<b>Screws</b> head design / recomm. torque			
Mounting screws	H1 / 0.5 – 0.7 Nm		
Clamping screws	-		
Ground conductor screws	M3.5 / 0.8 – 1.0 Nm		
Temperature range	-40 – +120 °C		
Description	Type	Part No.	P.U.
<b>Accessories</b>			
Crimping tool		95.101.0800.0	1
Crimping die	"E"	05.502.2400.0	1
Contact positioner	"2"	05.502.3200.0	1
Extraction tool		05.502.0000.0	1
<b>Housing 500 V</b>			
Size	16H	Page 162, 166, 172, 176	
Size	24H	Page 190, 194, 200, 201, 204	
Size	32	Page 216	

# Dimensions

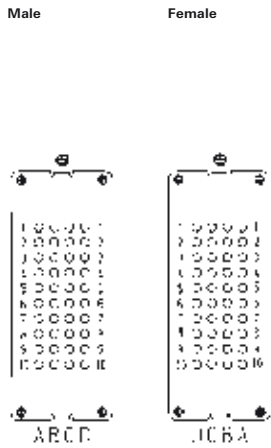
## 40-pole + ground – 80-pole + ground



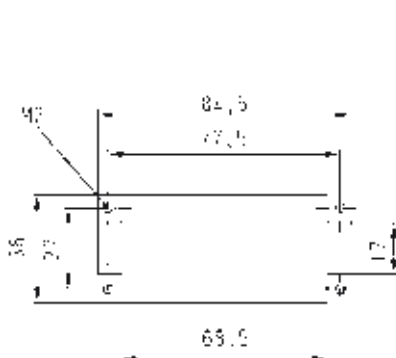
Number of poles	L1 [mm]	L2 [mm]	L3 [mm]	L4 [mm]
40	83.3	77.5	14.5	33.0
64	109.8	104.0	14.4	33.5
80	83.3	77.5	14.5	33.0

### 40-pole + ground

Connection side

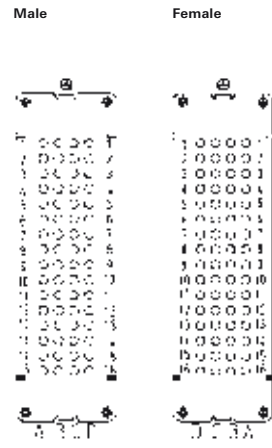


Cut-out

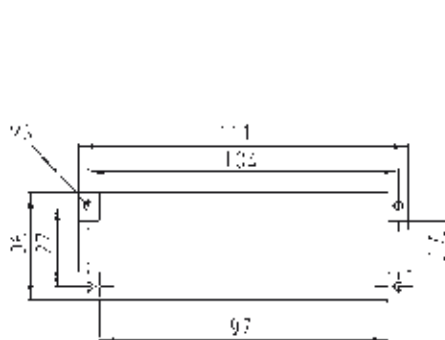


### 64-pole + ground

Connection side

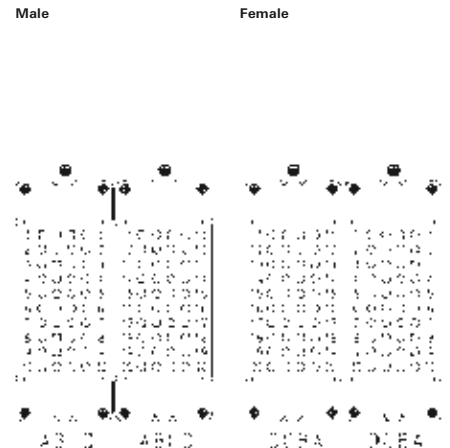


Cut-out

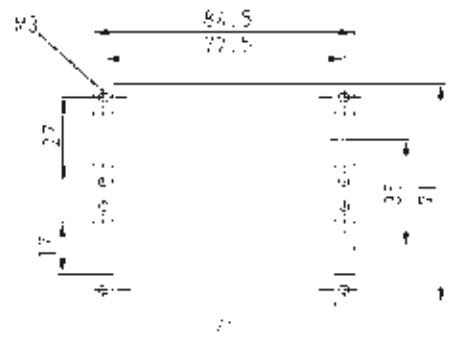


### 80-pole + ground

Connection side



Cut-out





# 250 V multipole adapter, screw connection

## Multipole adapter *revos* HD



### 40-pole + ground Size 16



### 64-pole + ground Size 24



Description	Type	Part No.	P.U.
<b>Multipole adapter <i>revos</i> HD 250 V</b>	<b>40-pole + ground</b>		
Male insert, ground right	HD SAS WR 40 2.5 25	73.115.4053.0	4
Female insert, ground right	HD BAS WR 40 2.5 25	73.105.4053.0	4
Male insert, ground left	HD SAS WL 40 2.5 25	73.110.4053.0	4
Female insert, ground left	HD BAS WL 40 2.5 25	73.100.4053.0	4
<b>Multipole adapter <i>revos</i> HD 250 V</b>	<b>64-pole + ground</b>		
Male insert, ground right	HD SAS WR 64 2.5 25	73.115.6453.3	2
Female insert, ground right	HD BAS WR 64 2.5 25	73.105.6453.3	2
Male insert, ground left	HD SAS WL 64 2.5 25	73.110.6453.3	2
Female insert, ground left	HD BAS WL 64 2.5 25	73.100.6453.3	2

#### Technical data

Rated voltage	250 V
Rated voltage according to UL/CSA	600 V
Rated impulse voltage	4 kV
Rated current	10 A
Degree of pollution	3

#### Rated cross section

EN 60999	0.5 – 2.5 mm <sup>2</sup>
UL	20 – 14 AWG
CSA	20 – 14 AWG

#### Contacts

Material	Copper alloy
Surface	Sn
Insulation strip length	12 mm
Contact resistance	≤ 6 mΩ
Mating cycles	50

#### Screws head design / recomm. torque

Mounting screws	H1 / 0.5 – 0.7 Nm
Clamping screws	M2.5 / 0.4 – 0.6 Nm
Ground conductor screws	H1 / 1.2 – 1.6 Nm
Temperature range	-40 – +120 °C

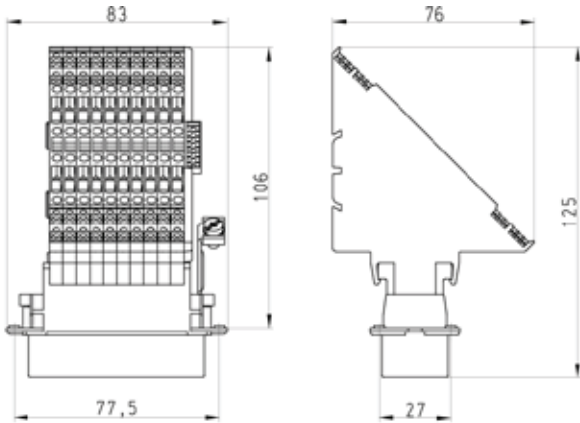
#### Housing

These multipole adapters may only be used with the following bases:

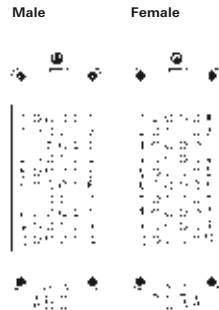
Description	Type	Part No.	P.U.
<b>Open-bottom base, Size 16</b>			
without cover, double locking lever	BAS GUT GX 16H 50 A	73.326.4028.0	1
with cover, double locking lever	BAS GUT GY 16H 50 A	73.327.4028.0	1
without cover, single locking lever	BAS GUT GV 16H 50 A	76.326.4028.0	1
with cover, single locking lever	BAS GUT GW 16H 50 A	76.327.4028.0	1
<b>Open-bottom base, Size 24</b>			
without cover, double locking lever	BAS GUT GX 24H 50 A	73.326.6428.0	1
with cover, double locking lever	BAS GUT GY 24H 50 A	73.327.6428.0	1
without cover, single locking lever	BAS GUT GV 24H 50 A	76.326.6428.0	1
with cover, single locking lever	BAS GUT GW 24H 50 A	76.327.6428.0	1

# Dimensions

## 40-pole + ground



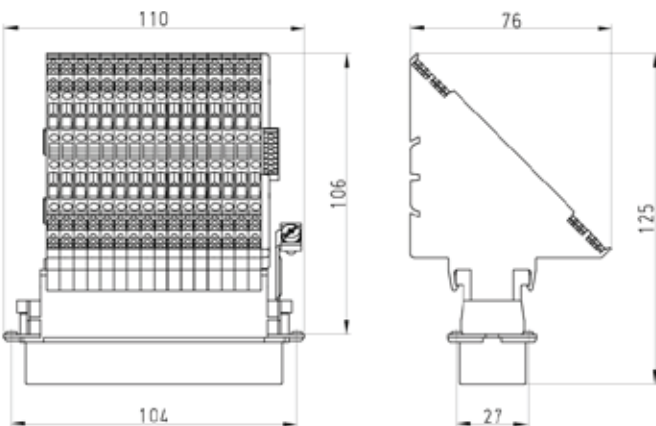
### Connection side



### Cut-out



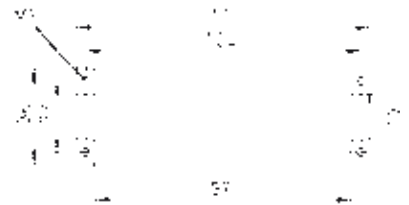
## 64-pole + ground



### Connection side



### Cut-out





# Connector with trigger action frame 250 V, crimp connection

## Trigger action frame *revos* HD



without locking levers  
with strain relief



without locking levers  
without strain relief



with locking levers  
with strain relief



with locking levers  
without strain relief

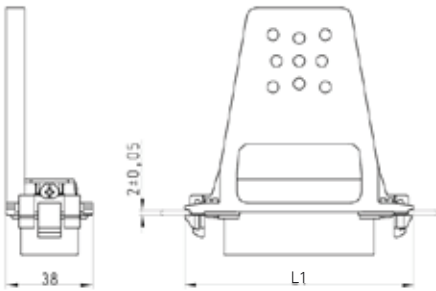


Description	Type	Part No.	P.U.
<b>Trigger action frame <i>revos</i> HD 250 V</b>			
<b>Male insert</b>			
without locking levers, with strain relief	ST 73.7 / 40 REVZ	Z5.571.6056.0	10
without locking levers, without strain relief	ST 73.7 / 40 REV	Z5.571.7056.0	10
with locking levers, with strain relief	ST 73.7 / 40 RVZ	Z5.571.8056.0	10
with locking levers, without strain relief	ST 73.7 / 40 RV	Z5.571.9056.0	10
<b>Female insert</b>			
without locking levers, with strain relief	BU 73.7 / 40 REVZ	Z5.570.6056.0	10
without locking levers, without strain relief	BU 73.7 / 40 REV	Z5.570.7056.0	10
with locking levers, with strain relief	BU 73.7 / 40 RVZ	Z5.570.8056.0	10
with locking levers, without strain relief	BU 73.7 / 40 RV	Z5.570.9056.0	10
<b>Multipole adapter <i>revos</i> HD 250 V</b>			
<b>Male insert</b>			
without locking levers, with strain relief	ST 73.7 / 64 REVZ	Z5.571.6156.0	10
without locking levers, without strain relief	ST 73.7 / 64 REV	Z5.571.7156.0	10
with locking levers, with strain relief	ST 73.7 / 64 RVZ	Z5.571.8156.0	10
with locking levers, without strain relief	ST 73.7 / 64 RV	Z5.571.9156.0	10
<b>Female insert</b>			
without locking levers, with strain relief	BU 73.7 / 64 REVZ	Z5.570.6156.0	10
without locking levers, without strain relief	BU 73.7 / 64 REV	Z5.570.7156.0	10
with locking levers, with strain relief	BU 73.7 / 64 RVZ	Z5.570.8156.0	10
with locking levers, without strain relief	BU 73.7 / 64 RV	Z5.570.9156.0	10
<b>Contacts for crimp connection</b>			
Male contact Sn, reel	0.2 – 0.56 / 24 – 20	05.544.0900.0	5000
Female contact Sn, reel	0.2 – 0.56 / 24 – 20	02.124.0900.0	5000
Male contact Sn, reel	0.75 – 1.5 / 18 – 16	05.544.1000.0	5000
Female contact Sn, reel	0.75 – 1.5 / 18 – 16	02.124.1000.0	5000
Male contact Sn, single	0.2 – 0.56 / 24 – 20	05.544.0929.0	200
Female contact Sn, single	0.2 – 0.56 / 24 – 20	02.124.0929.0	200
Male contact Sn, single	0.75 – 1.5 / 18 – 16	05.544.1029.0	200
Female contact Sn, single	0.75 – 1.5 / 18 – 16	02.124.1029.0	200
Male contact Au, reel	0.5 – 1.5 / 20 – 16	05.544.1400.0	5000
Female contact Au, reel	0.5 – 1.5 / 20 – 16	02.124.1400.0	5000
Male contact Au, single	0.5 – 1.5 / 20 – 16	05.544.1429.0	200
Female contact Au, single	0.5 – 1.5 / 20 – 16	02.124.1429.0	200
<b>Technical data</b>			
Rated voltage	250 V		
Rated voltage according to UL/CSA	600 V		
Rated impulse voltage	4 kV		
Rated current	10 A		
Degree of pollution	3		
<b>Rated cross section</b>			
EN 60999	0.2 – 1.5 mm <sup>2</sup>		
UL	24 – 16 AWG		
CSA	24 – 16 AWG		
<b>Contacts</b>			
Material	-		
Surface	-		
Insulation strip length	4 mm		
Contact resistance	≤ 4 mΩ		
Mating cycles	Au 500 / Sn 50		
Temperature range	-40 – +120 °C		
Description	Type	Part No.	P.U.
<b>Accessories</b>			
Crimping tool		95.101.0800.0	1
Crimping die	"E"	05.502.2400.0	1
Contact positioner	"2"	05.502.3200.0	1
Extraction tool		05.502.0000.0	1

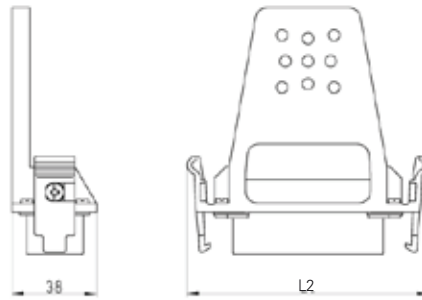
The mounting application may influence the air and creepage distances and thus the rated voltage.

# Dimensions

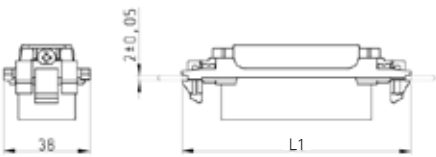
without locking levers  
with strain relief



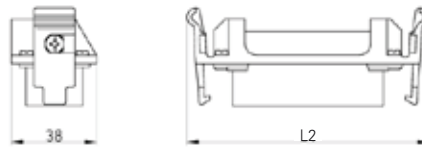
with locking levers  
with strain relief



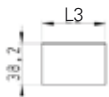
without locking levers  
without strain relief



with locking levers  
without strain relief



Sheet metal cutout for  
trigger action frame



sheet metal thickness  
 $2 \pm 0.05$  mm

Number of poles	L1 [mm]	L2 [mm]	L3 [mm]
40	101.0	106.5	96.0
64	127.8	134.4	122.8

# Multipole adapter with trigger action frame 250 V, screw connection

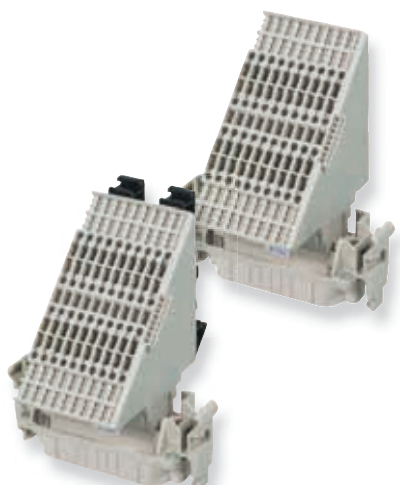
## Multipole adapter *revos* HD



### without locking levers



### with locking levers

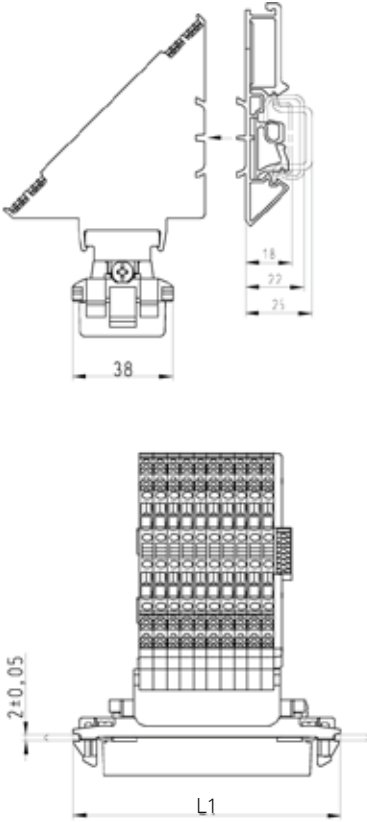


Description	Type	Part No.	P.U.
<b>Multipole adapter <i>revos</i> HD 250 V</b>			
<b>Male insert</b>		<b>40-pole + ground</b>	
without locking levers, ground right	ST 73.1 / 40 REV WR	Z5.573.8356.0	4
without locking levers, ground right, with U-foot	ST 73.1 / 40 REV U WR	Z5.573.9356.0	2
without locking levers, ground left	ST 73.1 / 40 REV WL	Z5.573.8056.0	4
without locking levers, ground left, with U-foot	ST 73.1 / 40 REV U WL	Z5.573.9156.0	2
with locking levers, ground right	ST 73.1 / 40 RV WR	Z5.573.8956.0	4
with locking levers, ground right, with U-foot	ST 73.1 / 40 RV U WR	Z5.573.9756.0	2
with locking levers, ground left	ST 73.1 / 40 RV WL	Z5.573.8656.0	4
with locking levers, ground left, with U-foot	ST 73.1 / 40 RV U WL	Z5.573.9556.0	2
<b>Female insert</b>			
without locking levers, ground right	BU 73.1 / 40 REV WR	Z5.572.8356.0	4
without locking levers, ground right, with U-foot	BU 73.1 / 40 REV U WR	Z5.572.9356.0	2
without locking levers, ground left	BU 73.1 / 40 REV WL	Z5.572.8056.0	4
without locking levers, ground left, with U-foot	BU 73.1 / 40 REV U WL	Z5.572.9156.0	2
with locking levers, ground right	BU 73.1 / 40 RV WR	Z5.572.8956.0	4
with locking levers, ground right, with U-foot	BU 73.1 / 40 RV U WR	Z5.572.9756.0	2
with locking levers, ground left	BU 73.1 / 40 RV WL	Z5.572.8656.0	4
with locking levers, ground left, with U-foot	BU 73.1 / 40 RV U WL	Z5.572.9556.0	2
<b>Multipole adapter <i>revos</i> HD 250 V</b>		<b>64-pole + ground</b>	
<b>Male insert</b>			
without locking levers, ground right	ST 73.1 / 64 REV WR	Z5.573.8456.0	2
without locking levers, ground right, with U-foot	ST 73.1 / 64 REV U WR	Z5.573.9456.0	2
without locking levers, ground left	ST 73.1 / 64 REV WL	Z5.573.8156.0	2
without locking levers, ground left, with U-foot	ST 73.1 / 64 REV U WL	Z5.573.9256.0	2
with locking levers, ground right	ST 73.1 / 64 RV WR	Z5.573.9056.0	2
with locking levers, ground right, with U-foot	ST 73.1 / 64 RV U WR	Z5.573.9856.0	2
with locking levers, ground left	ST 73.1 / 64 RV WL	Z5.573.8756.0	2
with locking levers, ground left, with U-foot	ST 73.1 / 64 RV U WL	Z5.573.9656.0	2
<b>Female insert</b>			
without locking levers, ground right	BU 73.1 / 64 REV WR	Z5.572.8456.0	2
without locking levers, ground right, with U-foot	BU 73.1 / 64 REV U WR	Z5.572.9456.0	2
without locking levers, ground left	BU 73.1 / 64 REV WL	Z5.572.8156.0	2
without locking levers, ground left, with U-foot	BU 73.1 / 64 REV U WL	Z5.572.9256.0	2
with locking levers, ground right	BU 73.1 / 64 RV WR	Z5.572.9056.0	2
with locking levers, ground right, with U-foot	BU 73.1 / 64 RV U WR	Z5.572.9856.0	2
with locking levers, ground left	BU 73.1 / 64 RV WL	Z5.572.8756.0	2
with locking levers, ground left, with U-foot	BU 73.1 / 64 RV U WL	Z5.572.9656.0	2
<b>Technical data</b>			
Rated voltage	250 V		
Rated voltage according to UL/CSA	600 V		
Rated impulse voltage	4 kV		
Rated current	10 A		
Degree of pollution	3		
<b>Rated cross section</b>			
EN 60999	0.2 – 1.5 mm <sup>2</sup>		
UL	24 – 16 AWG		
CSA	24 – 16 AWG		
<b>Screws</b> head design / recomm. torque			
Mounting screws	H1 / 0.5 – 0.7 Nm		
Clamping screws	-		
Ground conductor screws	M3 / 0.8 – 1.0 Nm		
Temperature range	-40 – +120 °C		
Description	Type	Part No.	P.U.
<b>Accessories</b>			
Universal foot	23 mm wide	05.583.0053.0	50

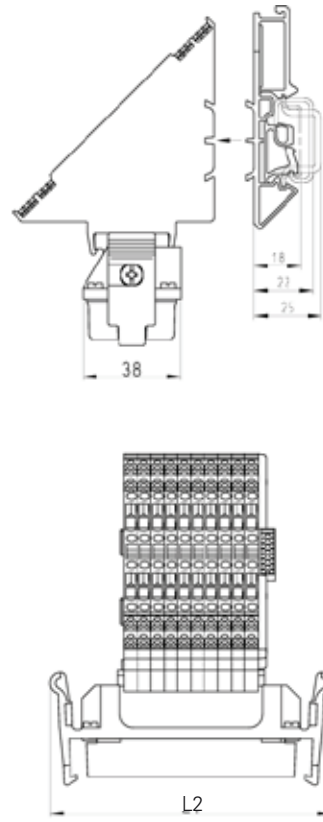
The mounting application may influence the air and creepage distances and thus the rated voltage.

# Dimensions

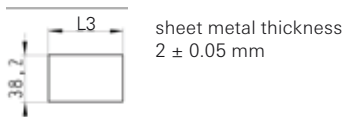
## without locking levers



## with locking levers



## Sheet metal cutout for trigger action frame



Number of poles	L1 [mm]	L2 [mm]	L3 [mm]
40	101.0	106.5	96.0
64	127.8	134.4	122.8