

# 500 V Hoods, single locking lever Size 16

## 500 V Hoods Size 16



### Lateral cable entry



### Top cable entry



### Multipole connectors for cable-to-cable couplings



Description	Type	M	Part No.	P.U.
<b>500 V Hoods, size 16</b>				
<b>Aluminum housing</b>				
<b>Lateral cable entry M25</b>				
with cable gland, IP54, $\rightarrow \varnothing \leftarrow$ 7.5 – 19 mm	BAS GOT GG 16 M25 50 A0	25	71.350.1635.0	1
with threaded collar	BAS GOT GG 16 M25 50 A1	25	71.350.1635.1	1
with intermediate support	BAS GOT GG 16 M25 50 A2	25	71.350.1635.2	1
with strain relief, IP54	BAS GOT GG 16 M25 50 A3	25	71.350.1635.3	1
<b>Lateral cable entry M32</b>				
with cable gland, IP54, $\rightarrow \varnothing \leftarrow$ 15 – 26.5 mm	BAS GOT GG 16 M32 50 A0	32	71.353.1635.0	1
with threaded collar	BAS GOT GG 16 M32 50 A1	32	71.353.1635.1	1
with intermediate support	BAS GOT GG 16 M32 50 A2	32	71.353.1635.2	1
with strain relief, IP54	BAS GOT GG 16 M32 50 A3	32	71.353.1635.3	1
<b>Top cable entry M25</b>				
with cable gland, IP54, $\rightarrow \varnothing \leftarrow$ 7.5 – 19 mm	BAS GOT GI 16 M25 50 A0	25	71.352.1635.0	1
with threaded collar	BAS GOT GI 16 M25 50 A1	25	71.352.1635.1	1
with intermediate support	BAS GOT GI 16 M25 50 A2	25	71.352.1635.2	1
with strain relief, IP54	BAS GOT GI 16 M25 50 A3	25	71.352.1635.3	1
<b>Top cable entry M32</b>				
with cable gland, IP54, $\rightarrow \varnothing \leftarrow$ 15 – 26.5 mm	BAS GOT GI 16 M32 50 A0	32	71.354.1635.0	1
with threaded collar	BAS GOT GI 16 M32 50 A1	32	71.354.1635.1	1
with intermediate support	BAS GOT GI 16 M32 50 A2	32	71.354.1635.2	1
with strain relief, IP54	BAS GOT GI 16 M32 50 A3	32	71.354.1635.3	1
<b>Multipole connectors for cable-to-cable couplings M25</b>				
with cable gland, IP54, $\rightarrow \varnothing \leftarrow$ 7.5 – 19 mm	BAS GOT GI 16 M25 50 A0	25	71.352.1635.0	1
with cable gland, IP54, $\rightarrow \varnothing \leftarrow$ 7.5 – 19 mm	BAS GOT GL 16 M25 50 A0	25	71.372.1635.0	1
Locking levers and gasket				
with threaded collar	BAS GOT GI 16 M25 50 A1	25	71.352.1635.1	1
with threaded collar	BAS GOT GL 16 M25 50 A1	25	71.372.1635.1	1
Locking levers and gasket				
with strain relief, IP54	BAS GOT GI 16 M25 50 A3	25	71.352.1635.3	1
with strain relief, IP54	BAS GOT GL 16 M25 50 A3	25	71.372.1635.3	1
Locking levers and gasket				
<b>Technical data</b>				
Material	Die cast aluminum alloy			
Surface	silicon-free			
Locking levers at Multipole connectors	Handle: Polyamide, UL94-V0; stainless steel: V2A			
Gasket at Multipole connectors	NBR			
<b>Degree of protection</b>				
with latched locking levers	IP54			
with appropriate cable glands	IP65			
Temperature range	-40 – +120 °C			
Description	Type	M	Part No.	P.U.
<b>Accessories</b>				
Cable gland IP68, plastic material, gray	Connection range 7 – 16 mm	25	Z5.507.1553.0	10
Cable gland IP68, nickel-plated brass	Connection range 11 – 18 mm	25	Z5.507.1521.0	10
Cable gland IP68, plastic material, gray	Connection range 10 – 21 mm	32	Z5.507.1753.0	10
Cable gland IP68, nickel-plated brass	Connection range 15 – 21 mm	32	Z5.507.1721.0	10
<b>Contact inserts</b>				
See the product matrix			Page 24–25	

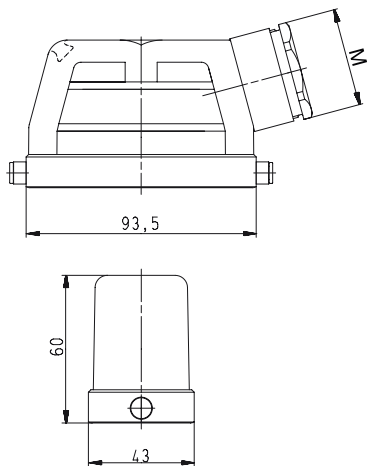
#### Note:

In 2013 the design of the revos housings will change. Through the use of an integrated insulation strip, voltage ranges of up to 690 V can then be covered. Additionally, a new, flexible marking system will be available to you.

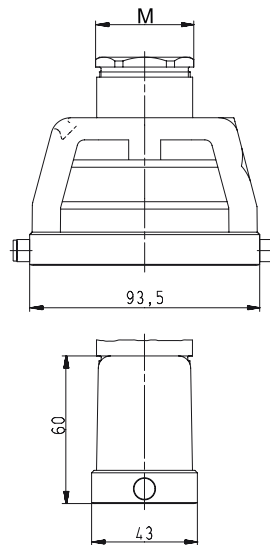
# Dimensions

## Hoods

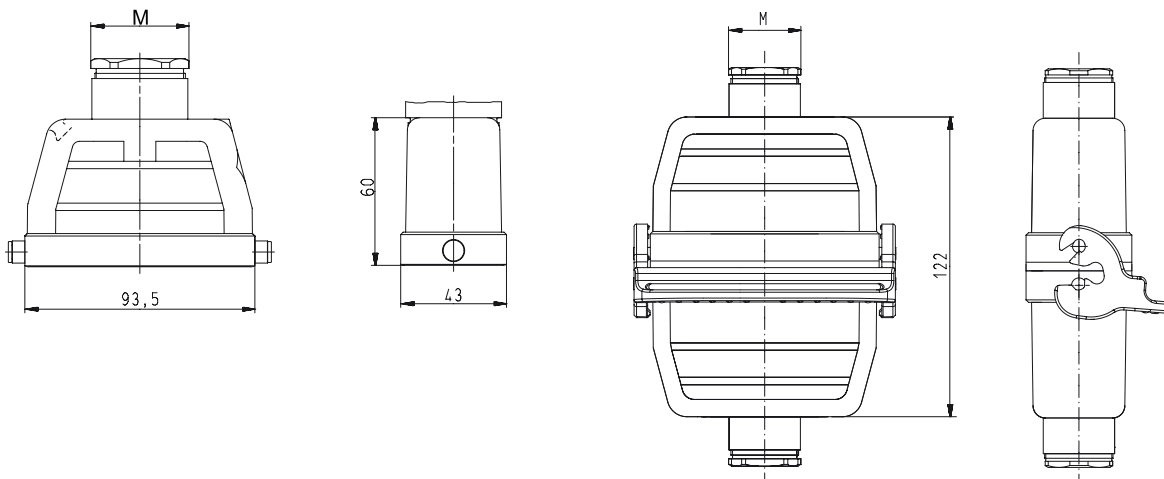
### Lateral cable entry



### Top cable entry



### Multipole connectors for cable-to-cable couplings



# 500 V Hoods, single locking lever Size 16H, increased height design

## 500 V Hoods Size 16H, increased height design

### Lateral cable entry



### Top cable entry



### Multipole connectors for cable-to-cable couplings



Description	Type	M	Part No.	P.U.
<b>500 V Hoods, size 16H</b>	<b>Aluminum housing</b>			
<b>Lateral cable entry M25</b>				
with cable gland, IP54, $\rightarrow \varnothing \leftarrow$ 7.5 – 19 mm	BAS GOT GG 40H M25 50 A0	25	76.350.4035.0	1
with threaded collar	BAS GOT GG 40H M25 50 A1	25	76.350.4035.1	1
with intermediate support	BAS GOT GG 40H M25 50 A2	25	76.350.4035.2	1
with strain relief, IP54	BAS GOT GG 40H M25 50 A3	25	76.350.4035.3	1
<b>Lateral cable entry M32</b>				
with cable gland, IP54, $\rightarrow \varnothing \leftarrow$ 15 – 26.5 mm	BAS GOT GG 40H M32 50 A0	32	76.353.4035.0	1
with threaded collar	BAS GOT GG 40H M32 50 A1	32	76.353.4035.1	1
with intermediate support	BAS GOT GG 40H M32 50 A2	32	76.353.4035.2	1
with strain relief, IP54	BAS GOT GG 40H M32 50 A3	32	76.353.4035.3	1
<b>Lateral cable entry M40</b>				
with cable gland, IP54, $\rightarrow \varnothing \leftarrow$ 19 – 27 mm	BAS GOT GG 40H M40 50 A0	40	76.360.4035.0	1
with threaded collar	BAS GOT GG 40H M40 50 A1	40	76.360.4035.1	1
<b>Top cable entry M25</b>				
with cable gland, IP54, $\rightarrow \varnothing \leftarrow$ 7.5 – 19 mm	BAS GOT GI 40H M25 50 A0	25	76.352.4035.0	1
with threaded collar	BAS GOT GI 40H M25 50 A1	25	76.352.4035.1	1
with intermediate support	BAS GOT GI 40H M25 50 A2	25	76.352.4035.2	1
with strain relief, IP54	BAS GOT GI 40H M25 50 A3	25	76.352.4035.3	1
<b>Top cable entry M32</b>				
with cable gland, IP54, $\rightarrow \varnothing \leftarrow$ 15 – 26.5 mm	BAS GOT GI 40H M32 50 A0	32	76.354.4035.0	1
with threaded collar	BAS GOT GI 40H M32 50 A1	32	76.354.4035.1	1
with intermediate support	BAS GOT GI 40H M32 50 A2	32	76.354.4035.2	1
with strain relief, IP54	BAS GOT GI 40H M32 50 A3	32	76.354.4035.3	1
<b>Top cable entry M40</b>				
with threaded collar	BAS GOT GI 40H M40 50 A1	40	76.362.4035.1	1
<b>Multipole connectors for cable-to-cable couplings M32</b>				
with cable gland, IP54, $\rightarrow \varnothing \leftarrow$ 15 – 26.5 mm	BAS GOT GI 40H M32 50 A0	32	76.354.4035.0	1
with cable gland, IP54, $\rightarrow \varnothing \leftarrow$ 15 – 26.5 mm	BAS GOT GL 40H M32 50 A0	32	76.374.4035.0	1
Locking levers and gasket				
<b>Technical data</b>				
Material	Die cast aluminum alloy			
Surface	silicon-free			
Locking levers at Multipole connectors	Handle: Polyamide, UL94-V0; stainless steel: V2A			
Gasket at Multipole connectors	NBR			
<b>Degree of protection</b>				
with latched locking levers	IP54			
with appropriate cable glands	IP65			
Temperature range	-40 – +120 °C			
Description	Type	M	Part No.	P.U.
<b>Accessories</b>				
Cable gland IP68, plastic material, gray	Connection range 7 – 16 mm	25	Z5.507.1553.0	10
Cable gland IP68, nickel-plated brass	Connection range 11 – 18 mm	25	Z5.507.1521.0	10
Cable gland IP68, plastic material, gray	Connection range 10 – 21 mm	32	Z5.507.1753.0	10
Cable gland IP68, nickel-plated brass	Connection range 15 – 21 mm	32	Z5.507.1721.0	10
Cable gland IP68, plastic material, gray	Connection range 16 – 28 mm	40	Z5.507.1953.0	1
Cable gland IP68, nickel-plated brass	Connection range 19 – 27 mm	40	Z5.507.1921.0	1
<b>Contact inserts</b>				
See the product matrix			Page 24-25	

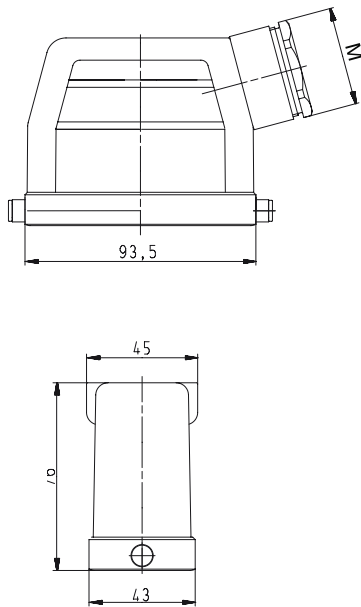
#### Note:

In 2013 the housing will be equipped with an insulation strip. With this modification, voltage ranges of up to 690 V can be covered.

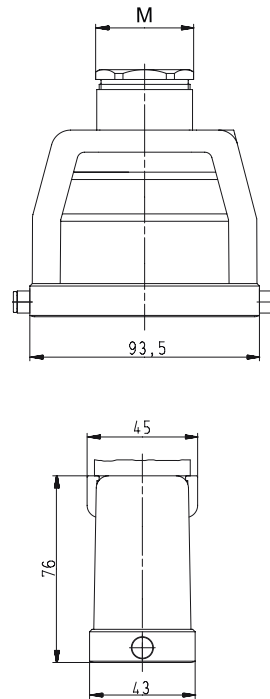
# Dimensions

## Hoods

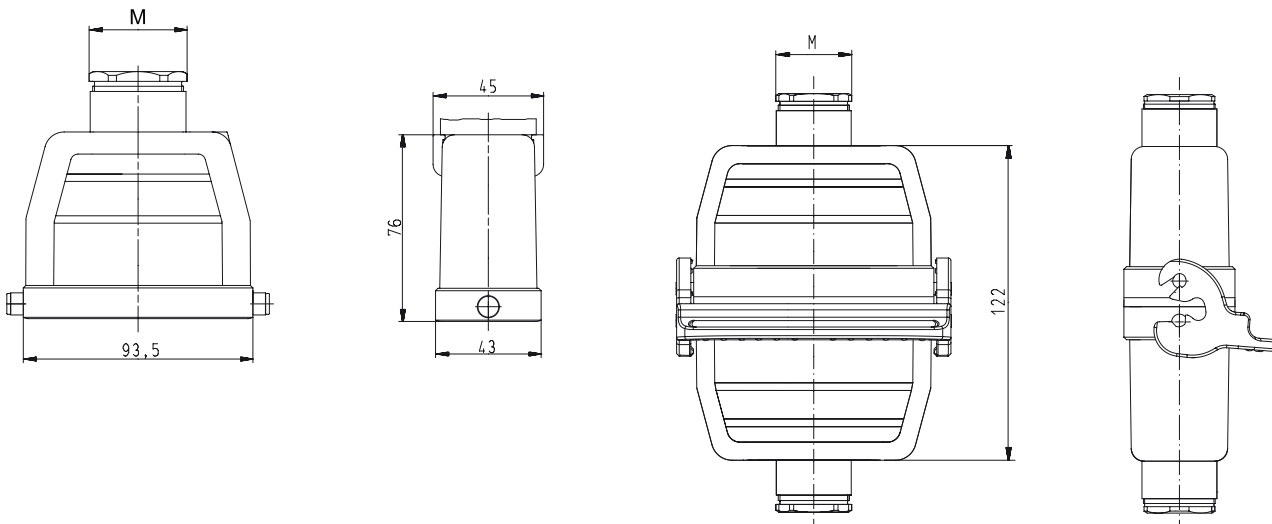
### Lateral cable entry



### Top cable entry



### Multipole connectors for cable-to-cable couplings



# 500 V Bases, single locking lever Size 16

## 500 V Bases, Size 16



### open

without cover  
with cover



### closed

#### 1 cable gland

without cover  
with cover










### closed

#### 1 cable gland, bottom

without cover  
with cover



Description	Type	M	Part No.	P.U.
<b>500 V Bases, size 16</b>	<b>Aluminum housing</b>			
<b>Open-bottom base</b>				
without cover	BAS GUT GK 16 50 A		71.320.1628.0	1
with cover	BAS GUT GP 16 50 A		71.325.1628.0	1
<b>Closed-bottom base</b>				
<b>2 cable glands, 2 x M25</b>				
<b>without cover</b>				
with cable gland, IP54,  7.5– 19 mm	BAS GUT GL 16 M25 50 A0	25	71.330.1635.0	1
with threaded collar	BAS GUT GL 16 M25 50 A1	25	71.330.1635.1	1
<b>with cover</b>				
with cable gland, IP54,  7.5– 19 mm	BAS GUT GR 16 M25 50 A0	25	71.340.1635.0	1
with threaded collar	BAS GUT GR 16 M25 50 A1	25	71.340.1635.1	1
<b>1 cable gland, left, 1 x M25</b>				
<b>without cover</b>				
with cable gland, IP54,  7.5– 19 mm	BAS GUT GM 16 M25 50 A0	25	71.331.1635.0	1
with threaded collar	BAS GUT GM 16 M25 50 A1	25	71.331.1635.1	1
<b>with cover</b>				
with cable gland, IP54,  7.5– 19 mm	BAS GUT GS 16 M25 50 A0	25	71.341.1635.0	1
with threaded collar	BAS GUT GS 16 M25 50 A1	25	71.341.1635.1	1
<b>1 cable gland, right, 1 x M25</b>				
<b>with cover</b>				
with cable gland, IP54,  7.5– 19 mm	BAS GUT GT 16 M25 50 A0	25	71.342.1635.0	1
with threaded collar	BAS GUT GT 16 M25 50 A1	25	71.342.1635.1	1
<b>1 cable gland, bottom, 1 x M25</b>				
<b>without cover</b>				
with cable gland, IP54,  7.5– 19 mm	BAS GUT GO 16 M25 50 A0	25	71.333.1635.0	1
with threaded collar	BAS GUT GO 16 M25 50 A1	25	71.333.1635.1	1
<b>with cover</b>				
with cable gland, IP54,  7.5– 19 mm	BAS GUT GU 16 M25 50 A0	25	71.343.1635.0	1
with threaded collar	BAS GUT GU 16 M25 50 A1	25	71.343.1635.1	1
<b>Technical data</b>				
Material	Die cast aluminum alloy			
Surface	silicon-free			
Locking levers	Handle: Polyamide, UL94-V0; stainless steel: V2A			
Gasket	NBR			
<b>Degree of protection</b>				
with latched locking levers	IP54			
with appropriate cable glands	IP65			
Temperature range	-40 – +120 °C			
Description	Type	M	Part No.	P.U.
<b>Accessories</b>				
Cable gland IP68, plastic material, gray	Connection range 7 – 16 mm	25	Z5.507.1553.0	10
Cable gland IP68, nickel-plated brass	Connection range 11 – 18 mm	25	Z5.507.1521.0	10
<b>Contact inserts</b>				
See the product matrix			Page 24–25	

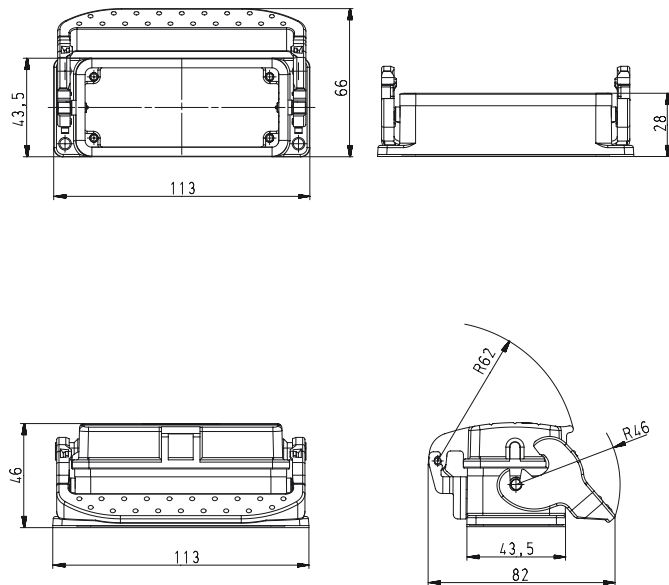
### Note:

In 2013 the design of the revos housings will change. Through the use of an integrated insulation strip, voltage ranges of up to 690 V can then be covered. Additionally, a new, flexible marking system will be available to you.

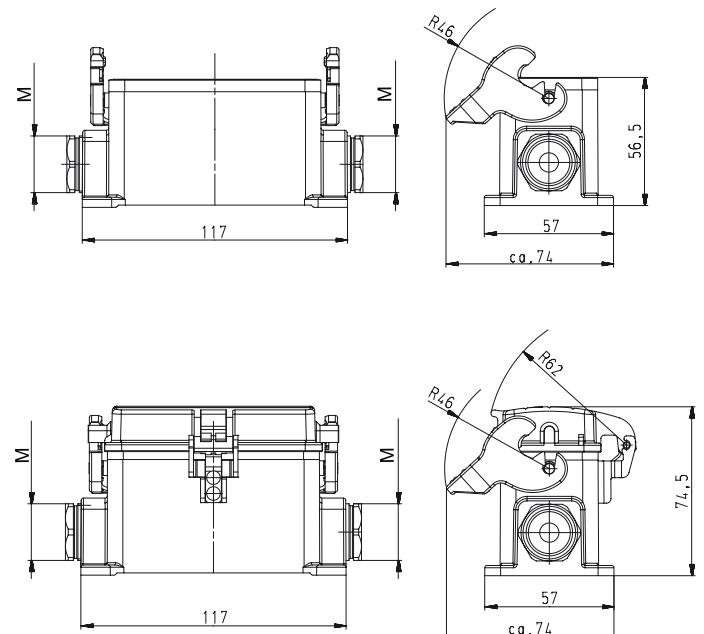
# Dimensions

## Bases

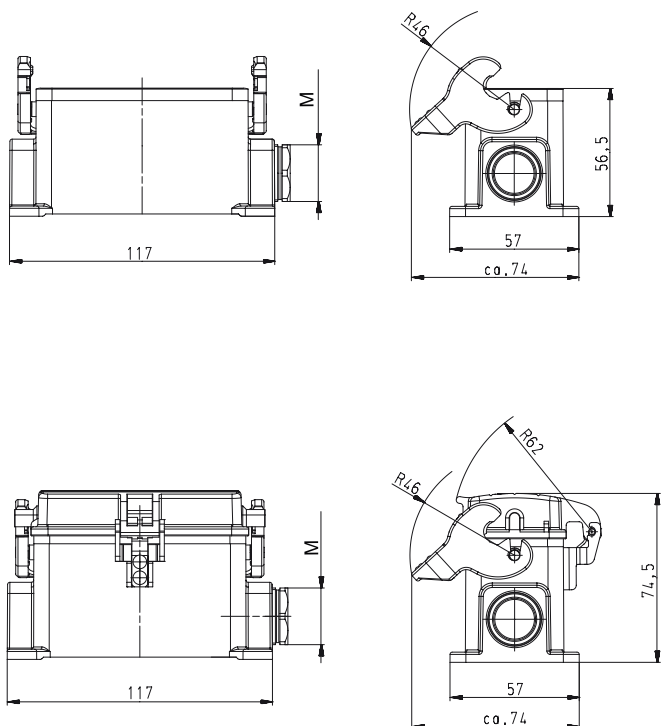
### open



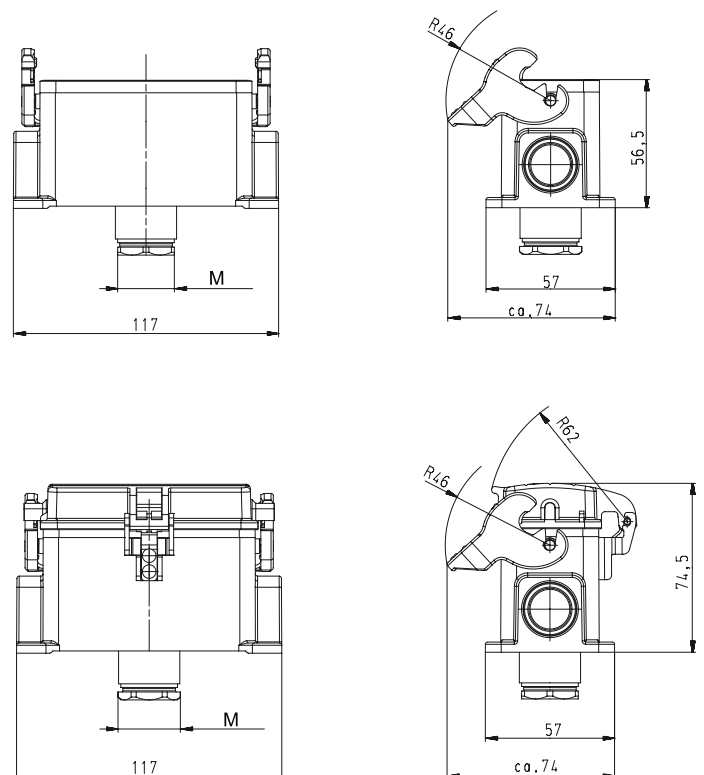
### closed, 2 cable glands



### closed, 1 cable gland



### closed, 1 cable gland, bottom





# 500 V Bases, single locking lever Size 16H, increased height design

## 500 V Bases Size 16H, increased height design

### closed M25 2 cable glands without cover with cover



### closed M32 2 cable glands without cover with cover



### closed M25 1 cable gland, bottom without cover with cover



Description	Type	M	Part No.	P.U.
<b>500 V Bases, size 16H</b>	<b>Aluminum housing</b>			
<b>Closed-bottom base</b>				
<b>2 cable glands, 2 x M25</b>				
<b>without cover</b>				
with cable gland, IP54, $\rightarrow \varnothing \leftarrow$ 7.5 – 19 mm	BAS GUT GL 40H M25 50 A0	25	76.330.4035.0	1
with threaded collar	BAS GUT GL 40H M25 50 A1	25	76.330.4035.1	1
<b>with cover</b>				
with cable gland, IP54, $\rightarrow \varnothing \leftarrow$ 7.5 – 19 mm	BAS GUT GR 40H M25 50 A0	25	76.340.4035.0	1
with threaded collar	BAS GUT GR 40H M25 50 A1	25	76.340.4035.1	1
<b>2 cable glands, 2 x M32</b>				
<b>without cover</b>				
with cable gland, IP54, $\rightarrow \varnothing \leftarrow$ 15 – 26.5 mm	BAS GUT GL 40H M32 50 A0	32	76.334.4035.0	1
with threaded collar	BAS GUT GL 40H M32 50 A1	32	76.334.4035.1	1
<b>with cover</b>				
with cable gland, IP54, $\rightarrow \varnothing \leftarrow$ 15 – 26.5 mm	BAS GUT GR 40H M32 50 A0	32	76.344.4035.0	1
with threaded collar	BAS GUT GR 40H M32 50 A1	32	76.344.4035.1	1
<b>1 cable gland, left, 1 x M25</b>				
<b>without cover</b>				
with cable gland, IP54, $\rightarrow \varnothing \leftarrow$ 7.5 – 19 mm	BAS GUT GM 40H M25 50 A0	25	76.331.4035.0	1
with threaded collar	BAS GUT GM 40H M25 50 A1	25	76.331.4035.1	1
<b>with cover</b>				
with cable gland, IP54, $\rightarrow \varnothing \leftarrow$ 7.5 – 19 mm	BAS GUT GS 40H M25 50 A0	25	76.341.4035.0	1
with threaded collar	BAS GUT GS 40H M25 50 A1	25	76.341.4035.1	1
<b>1 cable gland, left, 1 x M32</b>				
<b>without cover</b>				
with cable gland, IP54, $\rightarrow \varnothing \leftarrow$ 15 – 26.5 mm	BAS GUT GM 40H M32 50 A0	32	76.335.4035.0	1
with threaded collar	BAS GUT GM 40H M32 50 A1	32	76.335.4035.1	1
<b>with cover</b>				
with cable gland, IP54, $\rightarrow \varnothing \leftarrow$ 15 – 26.5 mm	BAS GUT GS 40H M32 50 A0	32	76.345.4035.0	1
with threaded collar	BAS GUT GS 40H M32 50 A1	32	76.345.4035.1	1
<b>1 cable gland, right, 1 x M25</b>				
<b>with cover</b>				
with cable gland, IP54, $\rightarrow \varnothing \leftarrow$ 7.5 – 19 mm	BAS GUT GT 40H M25 50 A0	25	76.342.4035.0	1
with threaded collar	BAS GUT GT 40H M25 50 A1	25	76.342.4035.1	1
<b>1 cable gland, right, 1 x M32</b>				
<b>with cover</b>				
with cable gland, IP54, $\rightarrow \varnothing \leftarrow$ 15 – 26.5 mm	BAS GUT GT 40H M32 50 A0	32	76.346.4035.0	1
with threaded collar	BAS GUT GT 40H M32 50 A1	32	76.346.4035.1	1
<b>1 cable gland, bottom, 1 x M25</b>				
<b>without cover</b>				
with cable gland, IP54, $\rightarrow \varnothing \leftarrow$ 7.5 – 19 mm	BAS GUT GO 40H M25 50 A0	25	76.333.4035.0	1
with threaded collar	BAS GUT GO 40H M25 50 A1	25	76.333.4035.1	1
<b>with cover</b>				
with cable gland, IP54, $\rightarrow \varnothing \leftarrow$ 7.5 – 19 mm	BAS GUT GU 40H M25 50 A0	25	76.343.4035.0	1
with threaded collar	BAS GUT GU 40H M25 50 A1	25	76.343.4035.1	1
<b>1 cable gland, bottom, 1 x M32</b>				
<b>without cover</b>				
with cable gland, IP54, $\rightarrow \varnothing \leftarrow$ 15 – 26.5 mm	BAS GUT GO 40H M32 50 A0	32	76.337.4035.0	1
with threaded collar	BAS GUT GO 40H M32 50 A1	32	76.337.4035.1	1
<b>with cover</b>				
with cable gland, IP54, $\rightarrow \varnothing \leftarrow$ 15 – 26.5 mm	BAS GUT GU 40H M32 50 A0	32	76.347.4035.0	1
with threaded collar	BAS GUT GU 40H M32 50 A1	32	76.347.4035.1	1

#### Technical data

Material	Die cast aluminum alloy
Surface	silicon-free
Locking levers	Handle: Polyamide, UL94-V0; stainless steel: V2A
Gasket	NBR
<b>Degree of protection</b>	
with latched locking levers	IP54
with appropriate cable glands	IP65
Temperature range	-40 – +120 °C

Description	Type	M	Part No.	P.U.
<b>Accessories</b>				
Cable gland IP68, plastic material, gray	Connection range 7 – 16 mm	25	Z5.507.1553.0	10
Cable gland IP68, nickel-plated brass	Connection range 11 – 18 mm	25	Z5.507.1521.0	10
Cable gland IP68, plastic material, gray	Connection range 10 – 21 mm	32	Z5.507.1753.0	10
Cable gland IP68, nickel-plated brass	Connection range 15 – 21 mm	32	Z5.507.1721.0	10
<b>Contact inserts</b>				
See the product matrix			Page 24–25	

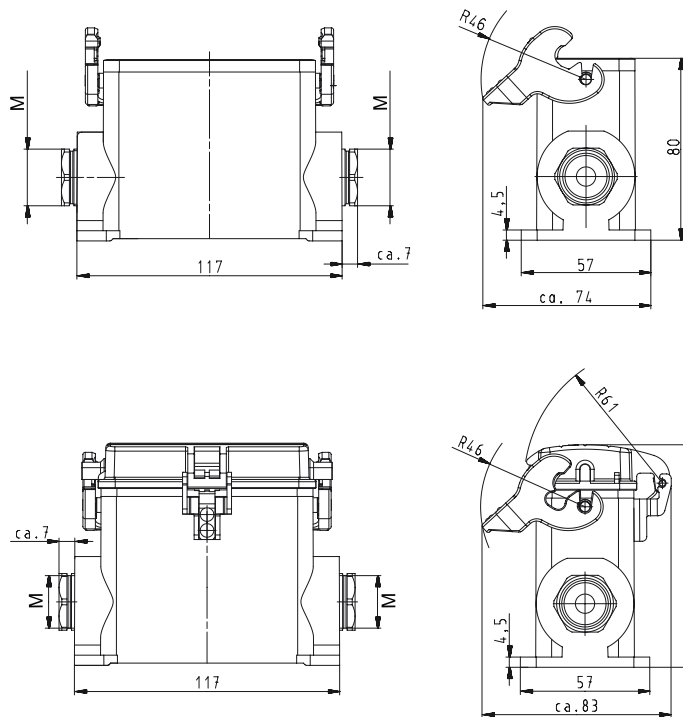
All Bases on this page are also available in M40 design.  
Part numbers available on request.

**Note:** In 2013 the housing will be equipped with an insulation strip. With this modification, voltage ranges of up to 690 V can be covered.

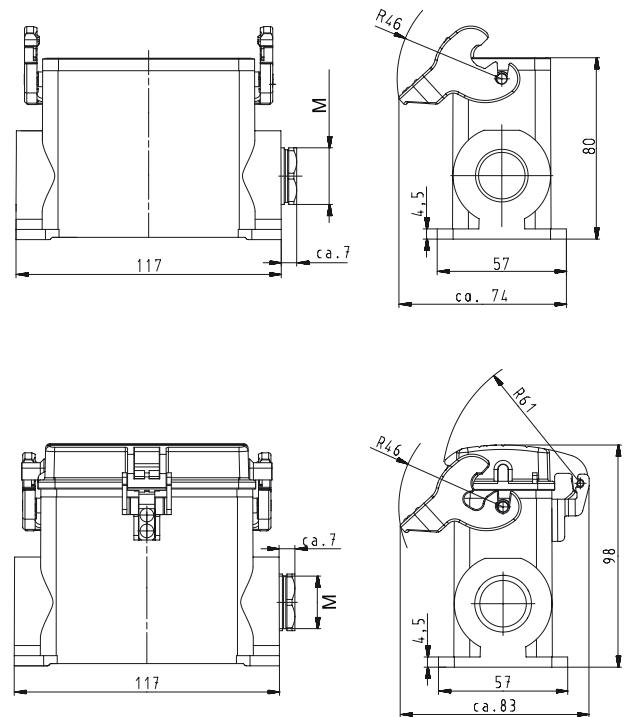
# Dimensions

## Bases

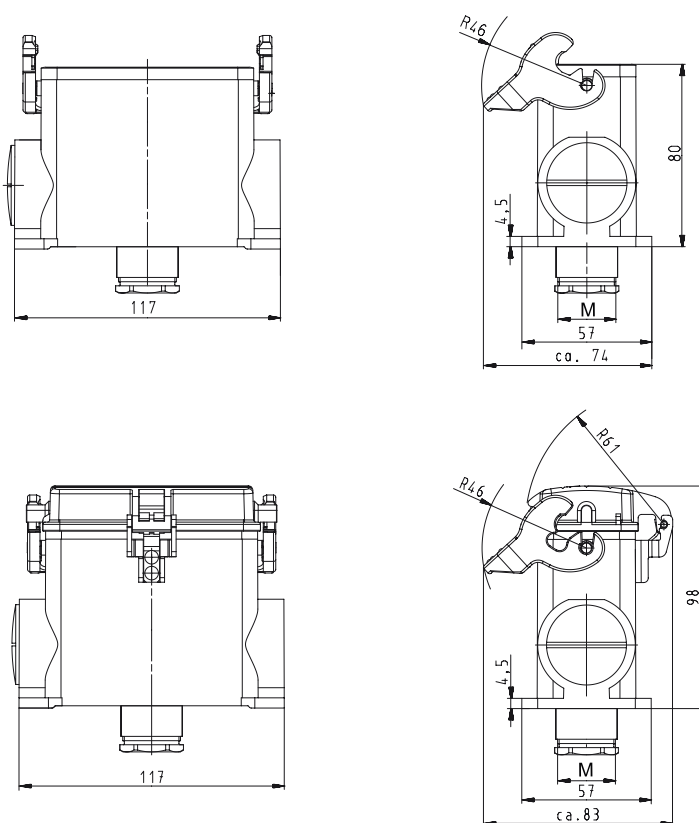
### closed, 2 cable glands



### closed, 1 cable gland



### closed, 1 cable gland, bottom





# 500 V Hoods, double locking lever Size 16

## 500 V Hoods Size 16



### Lateral cable entry



### Top cable entry



Description	Type	M	Part No.	P.U.
<b>500 V Hoods, size 16</b>				
<b>Lateral cable entry M25</b>	<b>Aluminum housing</b>			
with cable gland, IP54, $\rightarrow \varnothing \leftarrow$ 7.5 – 19 mm	BAS GOT GA 16 M25 50 A0	25	70.350.1635.0	1
with threaded collar	BAS GOT GA 16 M25 50 A1	25	70.350.1635.1	1
with intermediate support	BAS GOT GA 16 M25 50 A2	25	70.350.1635.2	1
with strain relief, IP54	BAS GOT GA 16 M25 50 A3	25	70.350.1635.3	1
<b>Lateral cable entry M32</b>				
with cable gland, IP54, $\rightarrow \varnothing \leftarrow$ 15 – 26.5 mm	BAS GOT GA 16 M32 50 A0	32	70.353.1635.0	1
with threaded collar	BAS GOT GA 16 M32 50 A1	32	70.353.1635.1	1
with intermediate support	BAS GOT GA 16 M32 50 A2	32	70.353.1635.2	1
with strain relief, IP54	BAS GOT GA 16 M32 50 A3	32	70.353.1635.3	1
<b>Top cable entry M25</b>				
with cable gland, IP54, $\rightarrow \varnothing \leftarrow$ 7.5 – 19 mm	BAS GOT GC 16 M25 50 A0	25	70.352.1635.0	1
with threaded collar	BAS GOT GC 16 M25 50 A1	25	70.352.1635.1	1
with intermediate support	BAS GOT GC 16 M25 50 A2	25	70.352.1635.2	1
with strain relief, IP54	BAS GOT GC 16 M25 50 A3	25	70.352.1635.3	1
<b>Top cable entry M32</b>				
with cable gland, IP54, $\rightarrow \varnothing \leftarrow$ 15 – 26.5 mm	BAS GOT GC 16 M32 50 A0	32	70.354.1635.0	1
with threaded collar	BAS GOT GC 16 M32 50 A1	32	70.354.1635.1	1
with intermediate support	BAS GOT GC 16 M32 50 A2	32	70.354.1635.2	1
with strain relief, IP54	BAS GOT GC 16 M32 50 A3	32	70.354.1635.3	1
<b>Technical data</b>				
Material	Die cast aluminum alloy			
Surface	silicon-free			
Locking levers	-			
Gasket	-			
<b>Degree of protection</b>				
with latched locking levers	IP54			
with appropriate cable glands	IP65			
Temperature range	-40 – +120 °C			
Description	Type	M	Part No.	P.U.
<b>Accessories</b>				
Cable gland IP68, plastic material, gray	Connection range 7 – 16 mm	25	Z5.507.1553.0	10
Cable gland IP68, nickel-plated brass	Connection range 11 – 18 mm	25	Z5.507.1521.0	10
Cable gland IP68, plastic material, gray	Connection range 10 – 21 mm	32	Z5.507.1753.0	10
Cable gland IP68, nickel-plated brass	Connection range 15 – 21 mm	32	Z5.507.1721.0	10
<b>Contact inserts</b>				
See the product matrix			Page 24–25	

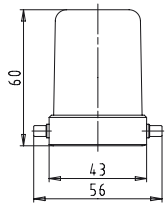
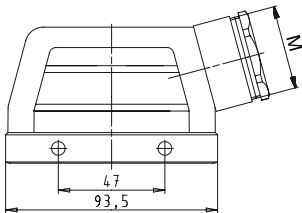
#### Note:

In 2013 the design of the revos housings will change. Through the use of an integrated insulation strip, voltage ranges of up to 690 V can then be covered. Additionally, a new, flexible marking system will be available to you.

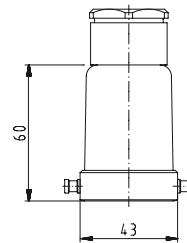
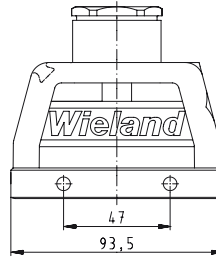
# Dimensions

## Hoods

### 500 V Size 16 Lateral cable entry



### 500 V Size 16 Top cable entry



# 500 V Hoods, double locking lever with Locking levers, Size 16

## 500 V Hoods Size 16



### Lateral cable entry



### Top cable entry



### Multipole connectors for cable-to-cable couplings



Description	Type	M	Part No.	P.U.
<b>500 V Hoods, size 16</b>				
<b>Lateral cable entry M25</b>				
with cable gland, IP54, $\rightarrow \varnothing \leftarrow$ 7.5 – 19 mm	BAS GOT GD 16 M25 50 A0	25	70.355.1635.0	1
with threaded collar	BAS GOT GD 16 M25 50 A1	25	70.355.1635.1	1
with intermediate support	BAS GOT GD 16 M25 50 A2	25	70.355.1635.2	1
with strain relief, IP54	BAS GOT GD 16 M25 50 A3	25	70.355.1635.3	1
<b>Lateral cable entry M32</b>				
with cable gland, IP54, $\rightarrow \varnothing \leftarrow$ 15 – 26.5 mm	BAS GOT GD 16 M32 50 A0	32	70.358.1635.0	1
with threaded collar	BAS GOT GD 16 M32 50 A1	32	70.358.1635.1	1
with intermediate support	BAS GOT GD 16 M32 50 A2	32	70.358.1635.2	1
with strain relief, IP54	BAS GOT GD 16 M32 50 A3	32	70.358.1635.3	1
<b>Top cable entry M25</b>				
with cable gland, IP54, $\rightarrow \varnothing \leftarrow$ 7.5 – 19 mm	BAS GOT GF 16 M25 50 A0	25	70.357.1635.0	1
with threaded collar	BAS GOT GF 16 M25 50 A1	25	70.357.1635.1	1
with intermediate support	BAS GOT GF 16 M25 50 A2	25	70.357.1635.2	1
with strain relief, IP54	BAS GOT GF 16 M25 50 A3	25	70.357.1635.3	1
<b>Top cable entry M32</b>				
with cable gland, IP54, $\rightarrow \varnothing \leftarrow$ 15 – 26.5 mm	BAS GOT GF 16 M32 50 A0	32	70.359.1635.0	1
with threaded collar	BAS GOT GF 16 M32 50 A1	32	70.359.1635.1	1
with intermediate support	BAS GOT GF 16 M32 50 A2	32	70.359.1635.2	1
with strain relief, IP54	BAS GOT GF 16 M32 50 A3	32	70.359.1635.3	1
<b>Multipole connectors for cable-to-cable couplings M25</b>				
with cable gland, IP54, $\rightarrow \varnothing \leftarrow$ 7.5 – 19 mm	BAS GOT GC 16 M25 50 A0	25	70.352.1635.0	1
with cable gland, IP54, $\rightarrow \varnothing \leftarrow$ 7.5 – 19 mm	BAS GOT GK 16 M25 50 A0	25	70.372.1635.0	1
Locking levers and gasket				
with threaded collar	BAS GOT GC 16 M25 50 A1	25	70.352.1635.1	1
with threaded collar	BAS GOT GK 16 M25 50 A1	25	70.372.1635.1	1
Locking levers and gasket				
with strain relief, IP54	BAS GOT GC 16 M25 50 A3	25	70.352.1635.3	1
with strain relief, IP54	BAS GOT GK 16 M25 50 A3	25	70.372.1635.3	1
Locking levers and gasket				
<b>Technical data</b>				
Material	Die cast aluminum alloy			
Surface	silicon-free			
Locking levers	Handle: Polyamide, UL94-V0; stainless steel: V2A			
Gasket for Multipole connectors	NBR			
<b>Degree of protection</b>				
with latched locking levers	IP54			
with appropriate cable glands	IP65			
Temperature range	-40 – +120 °C			
Description	Type	M	Part No.	P.U.
<b>Accessories</b>				
Cable gland IP68, plastic material, gray	Connection range 7 – 16 mm	25	Z5.507.1553.0	10
Cable gland IP68, nickel-plated brass	Connection range 11 – 18 mm	25	Z5.507.1521.0	10
Cable gland IP68, plastic material, gray	Connection range 10 – 21 mm	32	Z5.507.1753.0	10
Cable gland IP68, nickel-plated brass	Connection range 15 – 21 mm	32	Z5.507.1721.0	10
<b>Contact inserts</b>				
See the product matrix			Page 24–25	

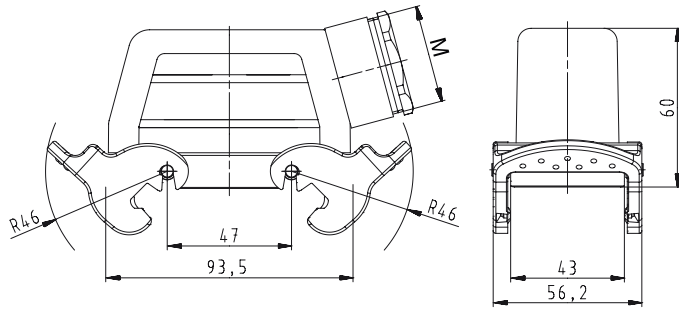
#### Note:

In 2013 the design of the revos housings will change. Through the use of an integrated insulation strip, voltage ranges of up to 690 V can then be covered. Additionally, a new, flexible marking system will be available to you.

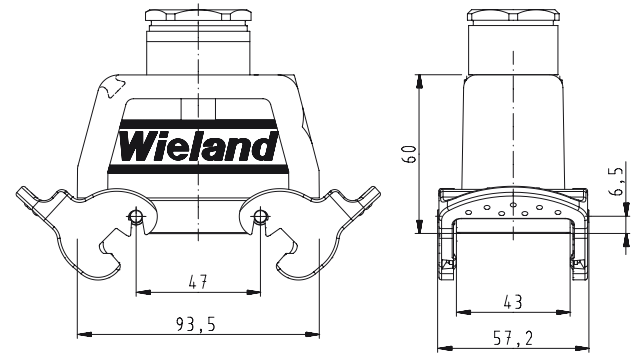
# Dimensions

## Hoods with Locking levers

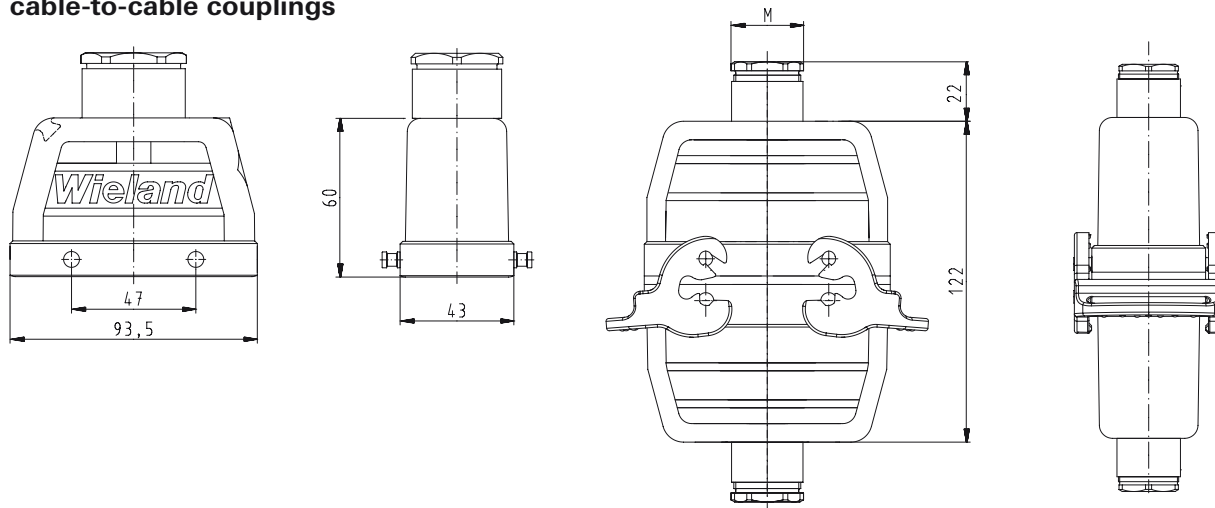
### Lateral cable entry



### Top cable entry



## Multipole connectors for cable-to-cable couplings



# 500 V Hoods, double locking lever Size 16H, increased height design

## 500 V Hoods Size 16H, increased height design

### Lateral cable entry



### Top cable entry

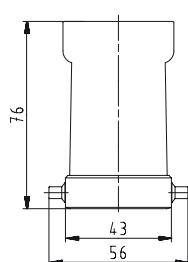
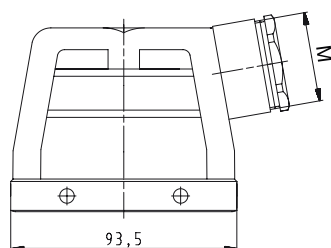


Description	Type	M	Part No.	P.U.
<b>500 V Hoods, size 16H</b>				
<b>Aluminum housing</b>				
<b>Lateral cable entry M25</b>				
with cable gland, IP54, $\rightarrow \varnothing \leftarrow$ 7.5 – 19 mm	BAS GOT GA 40H M25 50 A0	25	73.350.4035.0	1
with threaded collar	BAS GOT GA 40H M25 50 A1	25	73.350.4035.1	1
with intermediate support	BAS GOT GA 40H M25 50 A2	25	73.350.4035.2	1
with strain relief, IP54	BAS GOT GA 40H M25 50 A3	25	73.350.4035.3	1
<b>Lateral cable entry M32</b>				
with cable gland, IP54, $\rightarrow \varnothing \leftarrow$ 15 – 26.5 mm	BAS GOT GA 40H M32 50 A0	32	73.353.4035.0	1
with threaded collar	BAS GOT GA 40H M32 50 A1	32	73.353.4035.1	1
with intermediate support	BAS GOT GA 40H M32 50 A2	32	73.353.4035.2	1
with strain relief, IP54	BAS GOT GA 40H M32 50 A3	32	73.353.4035.3	1
<b>Lateral cable entry M40</b>				
with cable gland, IP54, $\rightarrow \varnothing \leftarrow$ 23 – 32 mm	BAS GOT GA 40H M40 50 A0	40	73.360.4035.0	1
with threaded collar	BAS GOT GA 40H M40 50 A1	40	73.360.4035.1	1
with intermediate support	BAS GOT GA 40H M40 50 A2	40	73.360.4035.2	1
<b>Top cable entry M25</b>				
with cable gland, IP54, $\rightarrow \varnothing \leftarrow$ 7.5 – 19 mm	BAS GOT GC 40H M25 50 A0	25	73.352.4035.0	1
with threaded collar	BAS GOT GC 40H M25 50 A1	25	73.352.4035.1	1
with intermediate support	BAS GOT GC 40H M25 50 A2	25	73.352.4035.2	1
with strain relief, IP54	BAS GOT GC 40H M25 50 A3	25	73.352.4035.3	1
<b>Top cable entry M32</b>				
with cable gland, IP54, $\rightarrow \varnothing \leftarrow$ 15 – 26.5 mm	BAS GOT GC 40H M32 50 A0	32	73.354.4035.0	1
with threaded collar	BAS GOT GC 40H M32 50 A1	32	73.354.4035.1	1
with intermediate support	BAS GOT GC 40H M32 50 A2	32	73.354.4035.2	1
with strain relief, IP54	BAS GOT GC 40H M32 50 A3	32	73.354.4035.3	1
<b>Top cable entry M40</b>				
with cable gland, IP54, $\rightarrow \varnothing \leftarrow$ 23 – 32 mm	BAS GOT GC 40H M40 50 A0	40	73.362.4035.0	1
with threaded collar	BAS GOT GC 40H M40 50 A1	40	73.362.4035.1	1
<b>Technical data</b>				
Material	Die cast aluminum alloy			
Surface	silicon-free			
Locking levers	-			
Gasket	-			
<b>Degree of protection</b>				
with latched locking levers	IP54			
with appropriate cable glands	IP65			
Temperature range	-40 – +120 °C			
Description	Type	M	Part No.	P.U.
<b>Accessories</b>				
Cable gland IP68, plastic material, gray	Connection range 7 – 16 mm	25	Z5.507.1553.0	10
Cable gland IP68, nickel-plated brass	Connection range 11 – 18 mm	25	Z5.507.1521.0	10
Cable gland IP68, plastic material, gray	Connection range 10 – 21 mm	32	Z5.507.1753.0	10
Cable gland IP68, nickel-plated brass	Connection range 15 – 21 mm	32	Z5.507.1721.0	10
Cable gland IP68, plastic material, gray	Connection range 16 – 28 mm	40	Z5.507.1953.0	1
Cable gland IP68, nickel-plated brass	Connection range 19 – 27 mm	40	Z5.507.1921.0	1
<b>Contact inserts</b>				
See the product matrix			Page 24–25	

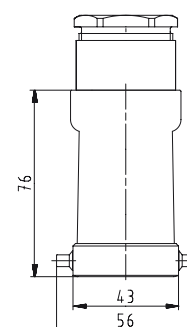
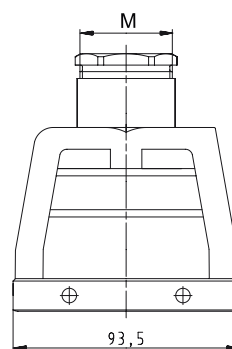
## Dimensions

### Hoods

#### Lateral cable entry



#### Top cable entry



#### Note:

In 2013 the housing will be equipped with an insulation strip. With this modification, voltage ranges of up to 690 V can be covered.

# 500 V Hoods, double locking lever with Locking levers, Size 16H, increased height design

## 500 V Hoods Size 16H, increased height design

### Lateral cable entry



### Top cable entry

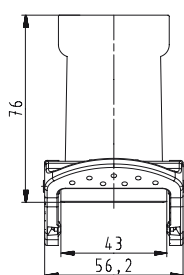
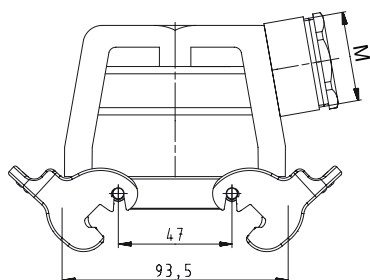


Description	Type	M	Part No.	P.U.
<b>500 V Hoods, size 16H</b>	<b>Aluminum housing</b>			
<b>Lateral cable entry M25</b>				
with cable gland, IP54, $\rightarrow \varnothing \leftarrow$ 7.5 – 19 mm	BAS GOT GD 40H M25 50 A0	25	73.355.4035.0	1
with threaded collar	BAS GOT GD 40H M25 50 A1	25	73.355.4035.1	1
with intermediate support	BAS GOT GD 40H M25 50 A2	25	73.355.4035.2	1
with strain relief, IP54	BAS GOT GD 40H M25 50 A3	25	73.355.4035.3	1
<b>Lateral cable entry M32</b>				
with cable gland, IP54, $\rightarrow \varnothing \leftarrow$ 15 – 26.5 mm	BAS GOT GD 40H M32 50 A0	32	73.358.4035.0	1
with threaded collar	BAS GOT GD 40H M32 50 A1	32	73.358.4035.1	1
with intermediate support	BAS GOT GD 40H M32 50 A2	32	73.358.4035.2	1
with strain relief, IP54	BAS GOT GD 40H M32 50 A3	32	73.358.4035.3	1
<b>Top cable entry M25</b>				
with cable gland, IP54, $\rightarrow \varnothing \leftarrow$ 7.5 – 19 mm	BAS GOT GF 40H M25 50 A0	25	73.357.4035.0	1
with threaded collar	BAS GOT GF 40H M25 50 A1	25	73.357.4035.1	1
with intermediate support	BAS GOT GF 40H M25 50 A2	25	73.357.4035.2	1
with strain relief, IP54	BAS GOT GF 40H M25 50 A3	25	73.357.4035.3	1
<b>Top cable entry M32</b>				
with cable gland, IP54, $\rightarrow \varnothing \leftarrow$ 15 – 26.5 mm	BAS GOT GF 40H M32 50 A0	32	73.359.4035.0	1
with threaded collar	BAS GOT GF 40H M32 50 A1	32	73.359.4035.1	1
with intermediate support	BAS GOT GF 40H M32 50 A2	32	73.359.4035.2	1
with strain relief, IP54	BAS GOT GF 40H M32 50 A3	32	73.359.4035.3	1
<b>Technical data</b>				
Material metal/plastic	Die cast aluminum alloy			
Surface	silicon-free			
Locking levers	Handle: Polyamide, UL94-V0; stainless steel: V2A			
Gasket	-			
<b>Degree of protection</b>				
with latched locking levers	IP54			
with appropriate cable glands	IP65			
Temperature range	-40 – +120 °C			
Description	Type	M	Part No.	P.U.
<b>Accessories</b>				
Cable gland IP68, plastic material, gray	Connection range 7 – 16 mm	25	Z5.507.1553.0	10
Cable gland IP68, nickel-plated brass	Connection range 11 – 18 mm	25	Z5.507.1521.0	10
Cable gland IP68, plastic material, gray	Connection range 10 – 21 mm	32	Z5.507.1753.0	10
Cable gland IP68, nickel-plated brass	Connection range 15 – 21 mm	32	Z5.507.1721.0	10
<b>Contact inserts</b>				
See the product matrix			Page 24–25	

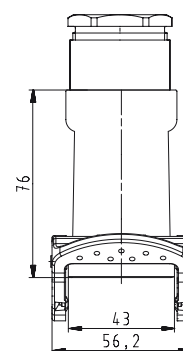
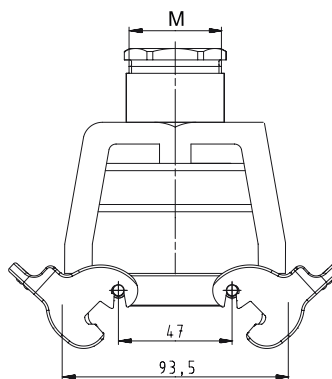
## Dimensions

### Hoods

#### Lateral cable entry



#### Top cable entry



#### Note:

In 2013 the housing will be equipped with an insulation strip. With this modification, voltage ranges of up to 690 V can be covered.

# 500 V Bases, double locking lever Size 16

## 500 V Bases, Size 16



### open

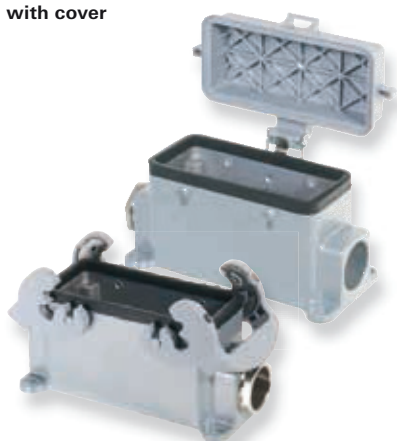
without cover  
with cover



### closed

1 cable gland, seitlich

without cover  
with cover



### closed

1 cable gland, bottom

without cover  
with cover



Description	Type	M	Part No.	P.U.
<b>500 V Bases, size 16</b>	<b>Aluminum housing</b>			
<b>Open-bottom base</b>				
without cover	BAS GUT GA 16 50 A		70.320.1628.0	1
with cover	BAS GUT GE 16 50 A		70.325.1628.0	1
<b>Closed-bottom base</b>				
<b>2 cable glands, 2 x M25</b>				
<b>without cover</b>				
with cable gland, IP54, $\rightarrow \text{Ø} \leftarrow$ 7.5 – 19 mm	BAS GUT GB 16 M25 50 A0	25	70.330.1635.0	1
with threaded collar	BAS GUT GB 16 M25 50 A1	25	70.330.1635.1	1
<b>with cover</b>				
with cable gland, IP54, $\rightarrow \text{Ø} \leftarrow$ 7.5 – 19 mm	BAS GUT GF 16 M25 50 A0	25	70.340.1635.0	1
with threaded collar	BAS GUT GF 16 M25 50 A1	25	70.340.1635.1	1
<b>1 cable gland, left, 1 x M25</b>				
<b>without cover</b>				
with cable gland, IP54, $\rightarrow \text{Ø} \leftarrow$ 7.5 – 19 mm	BAS GUT GC 16 M25 50 A0	25	70.331.1635.0	1
with threaded collar	BAS GUT GC 16 M25 50 A1	25	70.331.1635.1	1
<b>with cover</b>				
with cable gland, IP54, $\rightarrow \text{Ø} \leftarrow$ 7.5 – 19 mm	BAS GUT GG 16 M25 50 A0	25	70.341.1635.0	1
with threaded collar	BAS GUT GG 16 M25 50 A1	25	70.341.1635.1	1
<b>1 cable gland, right, 1 x M25</b>				
<b>with cover</b>				
with cable gland, IP54, $\rightarrow \text{Ø} \leftarrow$ 7.5 – 19 mm	BAS GUT GH 16 M25 50 A0	25	70.342.1635.0	1
with threaded collar	BAS GUT GH 16 M25 50 A1	25	70.342.1635.1	1
<b>1 cable gland, bottom, 1 x M25</b>				
<b>without cover</b>				
with cable gland, IP54, $\rightarrow \text{Ø} \leftarrow$ 7.5 – 19 mm	BAS GUT GD 16 M25 50 A0	25	70.333.1635.0	1
with threaded collar	BAS GUT GD 16 M25 50 A1	25	70.333.1635.1	1
<b>with cover</b>				
with cable gland, IP54, $\rightarrow \text{Ø} \leftarrow$ 7.5 – 19 mm	BAS GUT GI 16 M25 50 A0	25	70.343.1635.0	1
with threaded collar	BAS GUT GI 16 M25 50 A1	25	70.343.1635.1	1

### Technical data

Material	Die cast aluminum alloy
Surface	silicon-free
Locking levers	Handle: Polyamide, UL94-V0; stainless steel: V2A
Gasket	NBR
<b>Degree of protection</b>	
with latched locking levers	IP54
with appropriate cable glands	IP65
Temperature range	-40 – +120 °C

Description	Type	M	Part No.	P.U.
<b>Accessories</b>				
Cable gland IP68, plastic material, gray	Connection range 7 – 16 mm	25	Z5.507.1553.0	10
Cable gland IP68, nickel-plated brass	Connection range 11 – 18 mm	25	Z5.507.1521.0	10
<b>Contact inserts</b>				
See the product matrix			Page 24–25	

### Note:

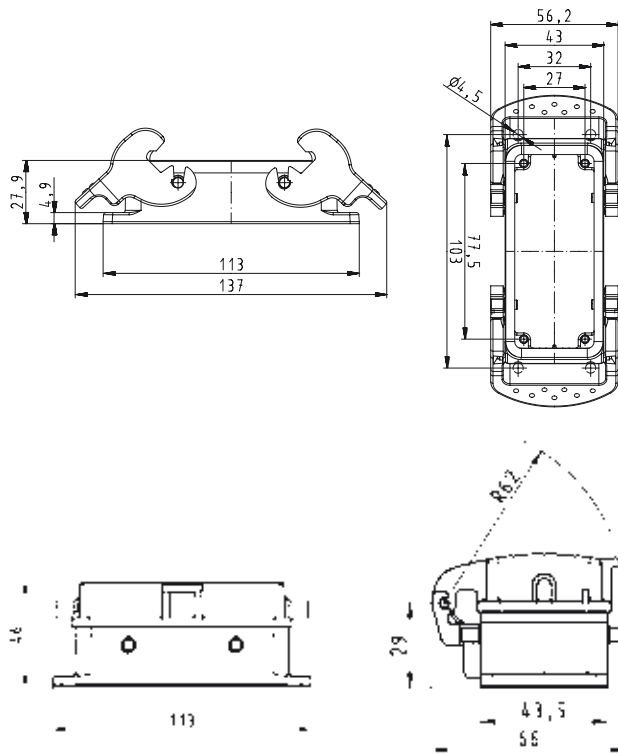
In 2013 the design of the revos housings will change. Through the use of an integrated insulation strip, voltage ranges of up to 690 V can then be covered. Additionally, a new, flexible marking system will be available to you.



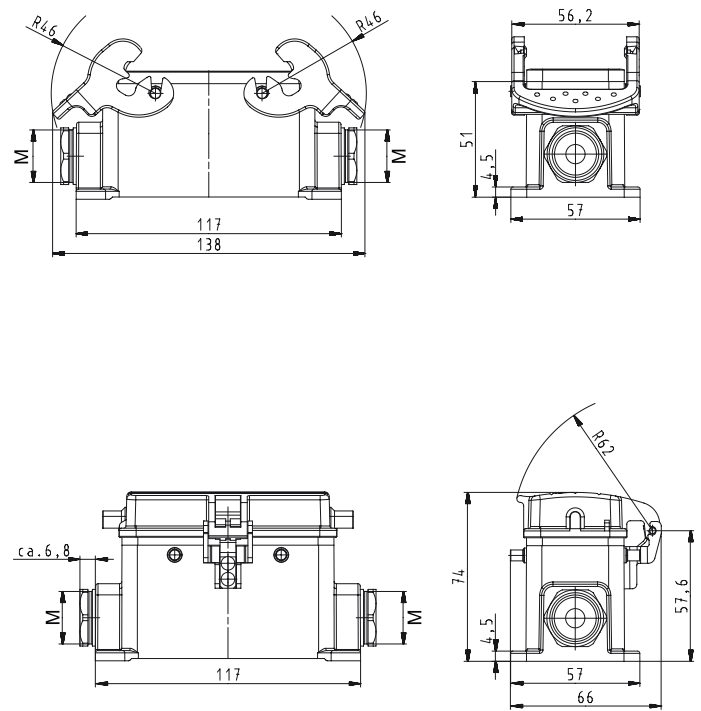
# Dimensions

## Bases

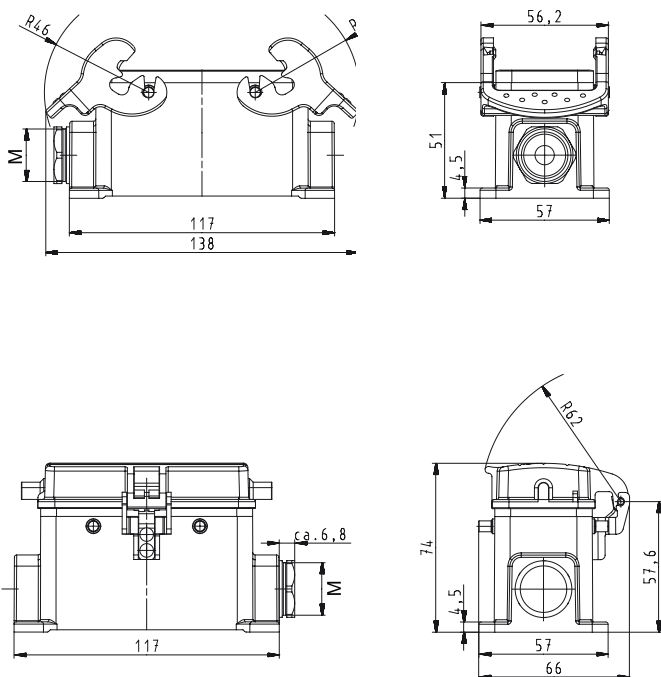
### open



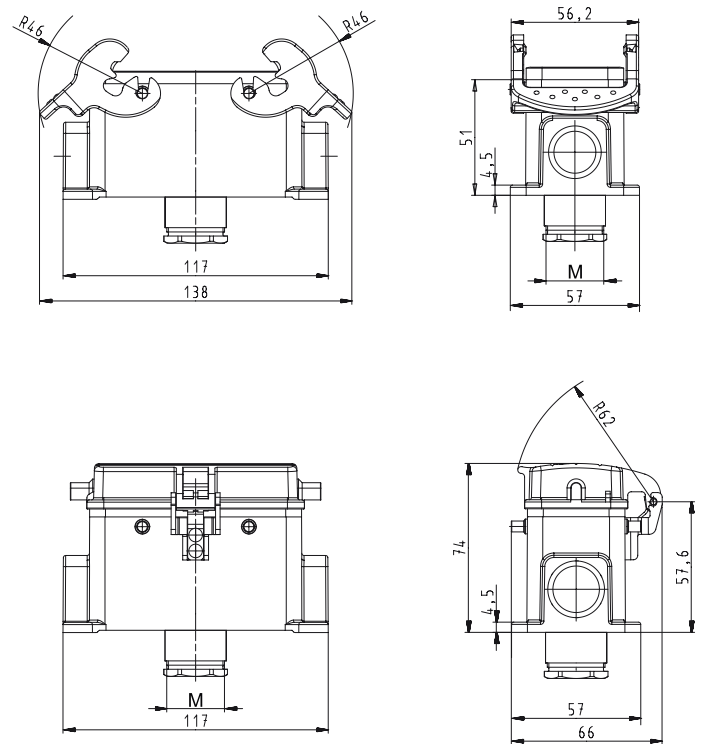
### closed, 2 cable glands



### closed, 1 cable gland



### closed, 1 cable gland, bottom



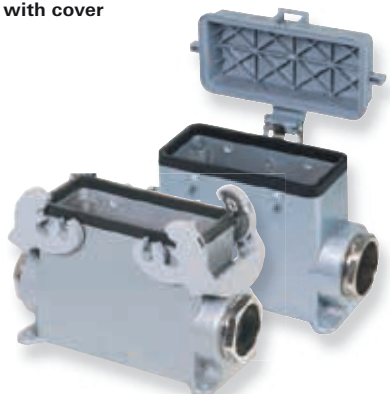
# 500 V Bases, double locking lever Size 16H, increased height design

## 500 V Bases Size 16H, increased height design

### closed M25 2 cable glands without cover with cover



### closed M32 2 cable glands without cover with cover



### closed M25 1 cable gland, bottom without cover with cover



Description	Type	M	Part No.	P.U.
<b>500 V Bases, size 16H</b>	<b>Aluminum housing</b>			
<b>Closed-bottom base</b>				
<b>2 cable glands, 2 x M25</b>				
<b>without cover</b>				
with cable gland, IP54, $\rightarrow \varnothing \leftarrow$ 7.5 – 19 mm	BAS GUT GB 40H M25 50 A0	25	73.330.4035.0	1
with threaded collar	BAS GUT GB 40H M25 50 A1	25	73.330.4035.1	1
<b>with cover</b>				
with cable gland, IP54, $\rightarrow \varnothing \leftarrow$ 7.5 – 19 mm	BAS GUT GF 40H M25 50 A0	25	73.340.4035.0	1
with threaded collar	BAS GUT GF 40H M25 50 A1	25	73.340.4035.1	1
<b>2 cable glands, 2 x M32</b>				
<b>without cover</b>				
with cable gland, IP54, $\rightarrow \varnothing \leftarrow$ 15 – 26.5 mm	BAS GUT GB 40H M32 50 A0	32	73.334.4035.0	1
with threaded collar	BAS GUT GB 40H M32 50 A1	32	73.334.4035.1	1
<b>with cover</b>				
with cable gland, IP54, $\rightarrow \varnothing \leftarrow$ 15 – 26.5 mm	BAS GUT GF 40H M32 50 A0	32	73.344.4035.0	1
with threaded collar	BAS GUT GF 40H M32 50 A1	32	73.344.4035.1	1
<b>2 cable glands, 2 x M40</b>				
<b>without cover</b>				
with threaded collar	BAS GUT GB 16H M40 50 A1	40	73.338.4035.1	1
<b>1 cable gland, left, 1 x M25</b>				
<b>without cover</b>				
with cable gland, IP54, $\rightarrow \varnothing \leftarrow$ 7.5 – 19 mm	BAS GUT GC 40H M25 50 A0	25	73.331.4035.0	1
with threaded collar	BAS GUT GC 40H M25 50 A1	25	73.331.4035.1	1
<b>with cover</b>				
with cable gland, IP54, $\rightarrow \varnothing \leftarrow$ 7.5 – 19 mm	BAS GUT GG 40H M25 50 A0	25	73.341.4035.0	1
with threaded collar	BAS GUT GG 40H M25 50 A1	25	73.341.4035.1	1
<b>1 cable gland, left, 1 x M32</b>				
<b>without cover</b>				
with cable gland, IP54, $\rightarrow \varnothing \leftarrow$ 15 – 26.5 mm	BAS GUT GC 40H M32 50 A0	32	73.335.4035.0	1
with threaded collar	BAS GUT GC 40H M32 50 A1	32	73.335.4035.1	1
<b>with cover</b>				
with cable gland, IP54, $\rightarrow \varnothing \leftarrow$ 15 – 26.5 mm	BAS GUT GG 40H M32 50 A0	32	73.345.4035.0	1
with threaded collar	BAS GUT GG 40H M32 50 A1	32	73.345.4035.1	1
<b>1 cable gland, left, 1 x M40</b>				
<b>without cover</b>				
with cable gland, IP54, $\rightarrow \varnothing \leftarrow$ 19 – 27 mm	BAS GUT GC 16H M40 50 A0	40	73.339.4035.0	1
with threaded collar	BAS GUT GC 16H M40 50 A1	40	73.340.4035.1	1
<b>1 cable gland, right, 1 x M25</b>				
<b>with cover</b>				
with cable gland, IP54, $\rightarrow \varnothing \leftarrow$ 7.5 – 19 mm	BAS GUT GH 40H M25 50 A0	25	73.342.4035.0	1
with threaded collar	BAS GUT GH 40H M25 50 A1	25	73.342.4035.1	1
<b>1 cable gland, right, 1 x M32</b>				
<b>with cover</b>				
with cable gland, IP54, $\rightarrow \varnothing \leftarrow$ 15 – 26.5 mm	BAS GUT GH 40H M32 50 A0	32	73.346.4035.0	1
with threaded collar	BAS GUT GH 40H M32 50 A1	32	73.346.4035.1	1
<b>1 cable gland, bottom, 1 x M25</b>				
<b>without cover</b>				
with cable gland, IP54, $\rightarrow \varnothing \leftarrow$ 7.5 – 19 mm	BAS GUT GD 40H M25 50 A0	25	73.333.4035.0	1
with threaded collar	BAS GUT GD 40H M25 50 A1	25	73.333.4035.1	1
<b>with cover</b>				
with cable gland, IP54, $\rightarrow \varnothing \leftarrow$ 7.5 – 19 mm	BAS GUT GI 40H M25 50 A0	25	73.343.4035.0	1
with threaded collar	BAS GUT GI 40H M25 50 A1	25	73.343.4035.1	1
<b>1 cable gland, bottom, 1 x M32</b>				
<b>without cover</b>				
with cable gland, IP54, $\rightarrow \varnothing \leftarrow$ 15 – 26.5 mm	BAS GUT GD 40H M32 50 A0	32	73.337.4035.0	1
with threaded collar	BAS GUT GD 40H M32 50 A1	32	73.337.4035.1	1
<b>with cover</b>				
with cable gland, IP54, $\rightarrow \varnothing \leftarrow$ 15 – 26.5 mm	BAS GUT GI 40H M32 50 A0	32	73.347.4035.0	1
with threaded collar	BAS GUT GI 40H M32 50 A1	32	73.347.4035.1	1

#### Technical data

Material	Die cast aluminum alloy
Surface	silicon-free
Locking levers	Handle: Polyamide, UL94-V0; stainless steel: V2A
Gasket	NBR
<b>Degree of protection</b>	
with latched locking levers	IP54
with appropriate cable glands	IP65
Temperature range	-40 – +120 °C

All Bases on this page are also available in M40 design.  
Part numbers available on request.

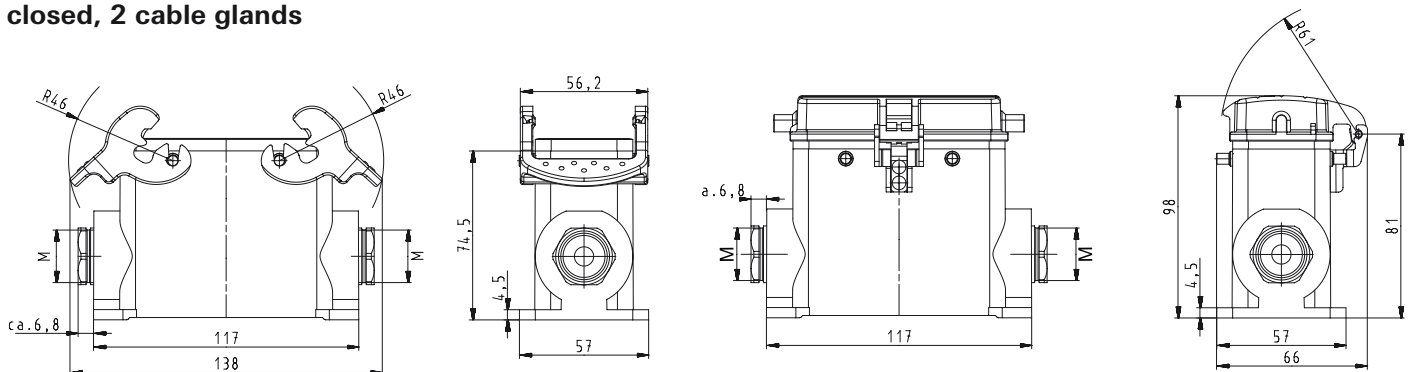
**Note:** In 2013 the housing will be equipped with an insulation strip. With this modification, voltage ranges of up to 690 V can be covered.

# Accessories, Dimensions

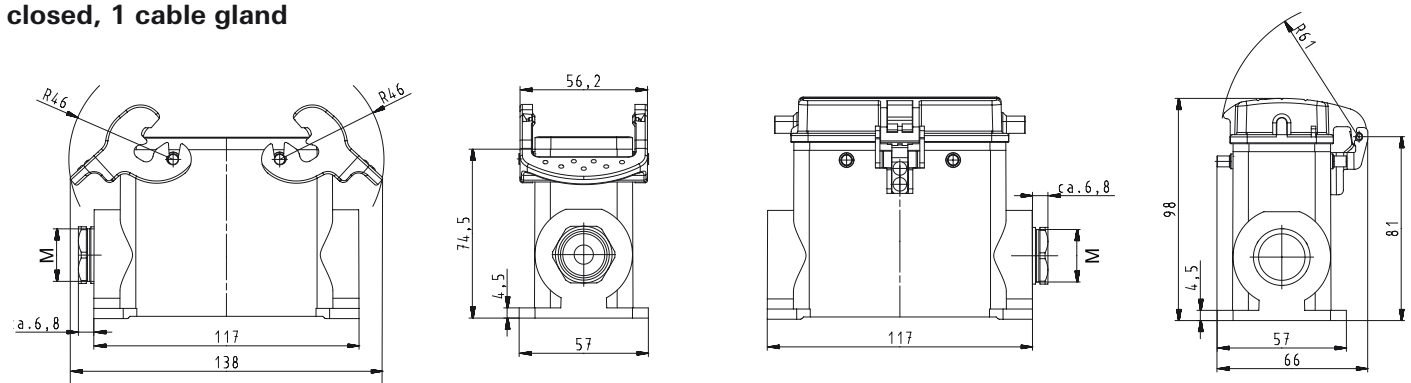
Description	Type	M	Part No.	P.U.
<b>Accessories</b>				
Cable gland IP68, plastic material, gray	Connection range 7 – 16 mm	25	Z5.507.1553.0	10
Cable gland IP68, nickel-plated brass	Connection range 11 – 18 mm	25	Z5.507.1521.0	10
Cable gland IP68, plastic material, gray	Connection range 10 – 21 mm	32	Z5.507.1753.0	10
Cable gland IP68, nickel-plated brass	Connection range 15 – 21 mm	32	Z5.507.1721.0	10
Cable gland IP68, plastic material, gray	Connection range 16 – 28 mm	40	Z5.507.1953.0	10
Cable gland IP68, nickel-plated brass	Connection range 19 – 27 mm	40	Z5.507.1921.0	10
<b>Contact inserts</b>				
See the product matrix			Page 24–25	

## Bases

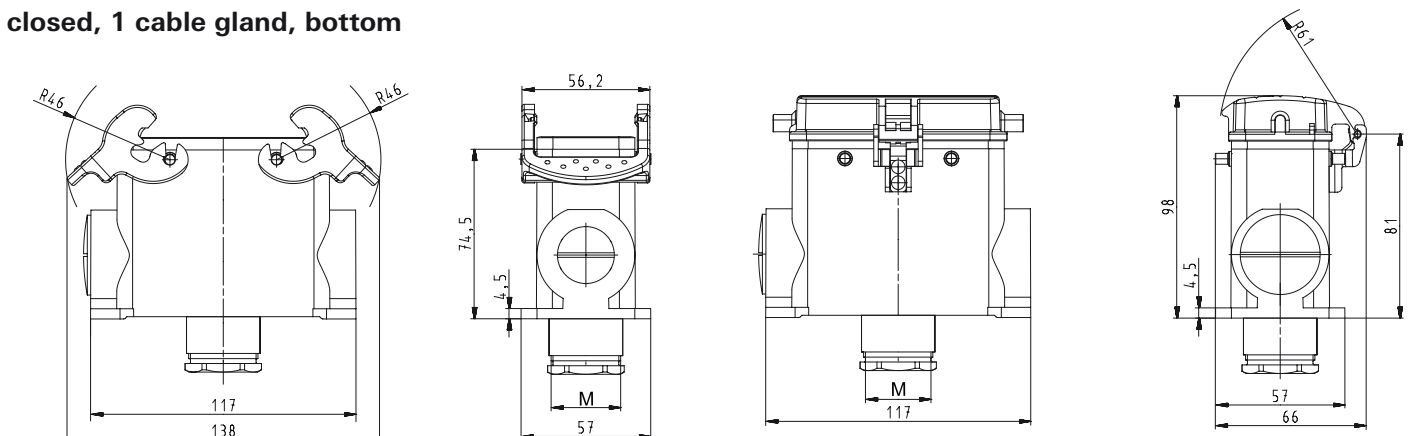
### closed, 2 cable glands



### closed, 1 cable gland



### closed, 1 cable gland, bottom



# 690 V Hoods, single locking lever Size 16

## 690 V Hoods Size 16



### Lateral cable entry



### Top cable entry



### Multipole connectors for cable-to-cable couplings



Description	Type	M	Part No.	P.U.
<b>690 V Hoods, size 16</b>				
<b>Lateral cable entry M25</b>				
with cable gland, IP54, $\rightarrow \varnothing \leftarrow$ 7.5 – 19 mm	BAS GOT GG 16 M25 69 A0	25	77.350.1635.0	1
with threaded collar	BAS GOT GG 16 M25 69 A1	25	77.350.1635.1	1
with intermediate support	BAS GOT GG 16 M25 69 A2	25	77.350.1635.2	1
with strain relief, IP54	BAS GOT GG 16 M25 69 A3	25	77.350.1635.3	1
<b>Lateral cable entry M32</b>				
with cable gland, IP54, $\rightarrow \varnothing \leftarrow$ 15 – 26.5 mm	BAS GOT GG 16 M32 69 A0	32	77.353.1635.0	1
with threaded collar	BAS GOT GG 16 M32 69 A1	32	77.353.1635.1	1
with intermediate support	BAS GOT GG 16 M32 69 A2	32	77.353.1635.2	1
with strain relief, IP54	BAS GOT GG 16 M32 69 A3	32	77.353.1635.3	1
<b>Top cable entry M25</b>				
with cable gland, IP54, $\rightarrow \varnothing \leftarrow$ 7.5 – 19 mm	BAS GOT GI 16 M25 69 A0	25	77.352.1635.0	1
with threaded collar	BAS GOT GI 16 M25 69 A1	25	77.352.1635.1	1
with intermediate support	BAS GOT GI 16 M25 69 A2	25	77.352.1635.2	1
with strain relief, IP54	BAS GOT GI 16 M25 69 A3	25	77.352.1635.3	1
<b>Top cable entry M32</b>				
with cable gland, IP54, $\rightarrow \varnothing \leftarrow$ 15 – 26.5 mm	BAS GOT GI 16 M32 69 A0	32	77.354.1635.0	1
with threaded collar	BAS GOT GI 16 M32 69 A1	32	77.354.1635.1	1
with intermediate support	BAS GOT GI 16 M32 69 A2	32	77.354.1635.2	1
with strain relief, IP54	BAS GOT GI 16 M32 69 A3	32	77.354.1635.3	1
<b>Multipole connectors for cable-to-cable couplings M25</b>				
with cable gland, IP54, $\rightarrow \varnothing \leftarrow$ 7.5 – 19 mm	BAS GOT GI 16 M25 69 A0	25	77.352.1635.0	1
with cable gland, IP54, $\rightarrow \varnothing \leftarrow$ 7.5 – 19 mm	BAS GOT GL 16 M25 69 A0	25	77.372.1635.0	1
Locking levers and gasket				
with threaded collar	BAS GOT GI 16 M25 69 A1	25	77.352.1635.1	1
with threaded collar	BAS GOT GL 16 M25 69 A1	25	77.372.1635.1	1
Locking levers and gasket				
with strain relief, IP54	BAS GOT GI 16 M25 69 A3	25	77.352.1635.3	1
with strain relief, IP54	BAS GOT GL 16 M25 69 A3	25	77.372.1635.3	1
Locking levers and gasket				
<b>Technical data</b>				
Material	Die cast aluminum alloy			
Surface	silicon-free			
Locking levers at Multipole connectors	Handle: Polyamide, UL94-V0; stainless steel: V2A			
Gasket at Multipole connectors	NBR			
<b>Degree of protection</b>				
with latched locking levers	IP54			
with appropriate cable glands	IP65			
Temperature range	-40 – +120 °C			
Description	Type	M	Part No.	P.U.
<b>Accessories</b>				
Cable gland IP68, plastic material, gray	Connection range 7 – 16 mm	25	Z5.507.1553.0	10
Cable gland IP68, nickel-plated brass	Connection range 11 – 18 mm	25	Z5.507.1521.0	10
Cable gland IP68, plastic material, gray	Connection range 10 – 21 mm	32	Z5.507.1753.0	10
Cable gland IP68, nickel-plated brass	Connection range 15 – 21 mm	32	Z5.507.1721.0	10
<b>Contact inserts</b>				
See the product matrix			Page 24–25	

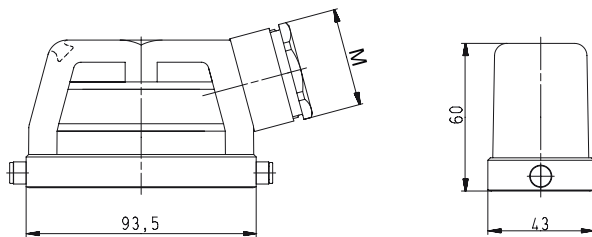
#### Note:

In 2013 the design and order numbers of the revos housings will change, but the function of the housings will remain intact. In addition, a new flexible marking system will be available to you. In the transition phase you can continue to order with the existing part number. You can find more detailed information and a cross-reference list in our e-Shop and on our homepage.

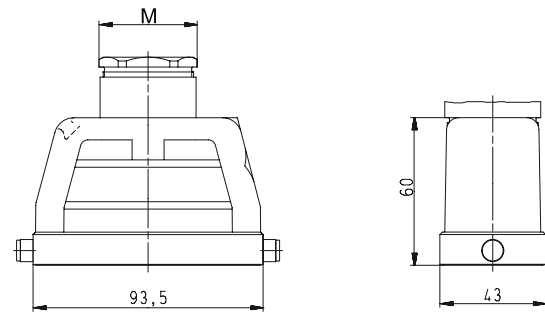
# Dimensions

## Hoods

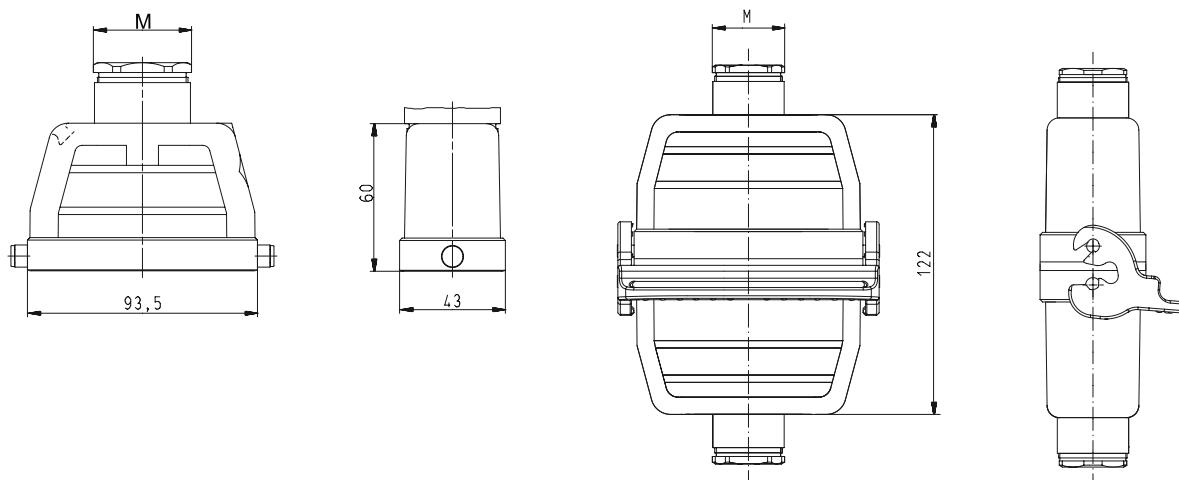
### Lateral cable entry



### Top cable entry



### Multipole connectors for cable-to-cable couplings



# 690 V Bases, single locking lever Size 16

## 690 V Bases, Size 16



### open

without cover  
with cover



### closed

1 cable gland, seitlich

without cover  
with cover



### closed

1 cable gland, bottom

without cover  
with cover



Description	Type	M	Part No.	P.U.
<b>690 V Bases, size 16</b>	<b>Aluminum housing</b>			
<b>Open-bottom base</b>				
without cover	BAS GUT GK 16 69 A		77.320.1628.0	1
with cover	BAS GUT GP 16 69 A		77.325.1628.0	1
<b>Closed-bottom base</b>				
<b>2 cable glands, 2 x M25</b>				
<b>without cover</b>				
with cable gland, IP54, $\rightarrow \text{Ø} \leftarrow$ 7.5–19 mm	BAS GUT GL 16 M25 69 A0	25	77.330.1635.0	1
with threaded collar	BAS GUT GL 16 M25 69 A1	25	77.330.1635.1	1
<b>with cover</b>				
with cable gland, IP54, $\rightarrow \text{Ø} \leftarrow$ 7.5–19 mm	BAS GUT GR 16 M25 69 A0	25	77.340.1635.0	1
with threaded collar	BAS GUT GR 16 M25 69 A1	25	77.340.1635.1	1
<b>1 cable gland, left, 1 x M25</b>				
<b>without cover</b>				
with cable gland, IP54, $\rightarrow \text{Ø} \leftarrow$ 7.5–19 mm	BAS GUT GM 16 M25 69 A0	25	77.331.1635.0	1
with threaded collar	BAS GUT GM 16 M25 69 A1	25	77.331.1635.1	1
<b>with cover</b>				
with cable gland, IP54, $\rightarrow \text{Ø} \leftarrow$ 7.5–19 mm	BAS GUT GS 16 M25 69 A0	25	77.341.1635.0	1
with threaded collar	BAS GUT GS 16 M25 69 A1	25	77.341.1635.1	1
<b>1 cable gland, right, 1 x M25</b>				
<b>with cover</b>				
with cable gland, IP54, $\rightarrow \text{Ø} \leftarrow$ 7.5–19 mm	BAS GUT GT 16 M25 69 A0	25	77.342.1635.0	1
with threaded collar	BAS GUT GT 16 M25 69 A1	25	77.342.1635.1	1
<b>1 cable gland, bottom, 1 x M25</b>				
<b>without cover</b>				
with cable gland, IP54, $\rightarrow \text{Ø} \leftarrow$ 7.5–19 mm	BAS GUT GO 16 M25 69 A0	25	77.333.1635.0	1
with threaded collar	BAS GUT GO 16 M25 69 A1	25	77.333.1635.1	1
<b>with cover</b>				
with cable gland, IP54, $\rightarrow \text{Ø} \leftarrow$ 7.5–19 mm	BAS GUT GU 16 M25 69 A0	25	77.343.1635.0	1
with threaded collar	BAS GUT GU 16 M25 69 A1	25	77.343.1635.1	1

### Technical data

Material	Die cast aluminum alloy
Surface	silicon-free
Locking levers	Handle: Polyamide, UL94-V0; stainless steel: V2A
Gasket	NBR
<b>Degree of protection</b>	
with latched locking levers	IP54
with appropriate cable glands	IP65
Temperature range	-40 – +120 °C

Description	Type	M	Part No.	P.U.
<b>Accessories</b>				
Cable gland IP68, plastic material, gray	Connection range 7 – 16 mm	25	Z5.507.1553.0	10
Cable gland IP68, nickel-plated brass	Connection range 11 – 18 mm	25	Z5.507.1521.0	10
<b>Contact inserts</b>				
See the product matrix			Page 24–25	

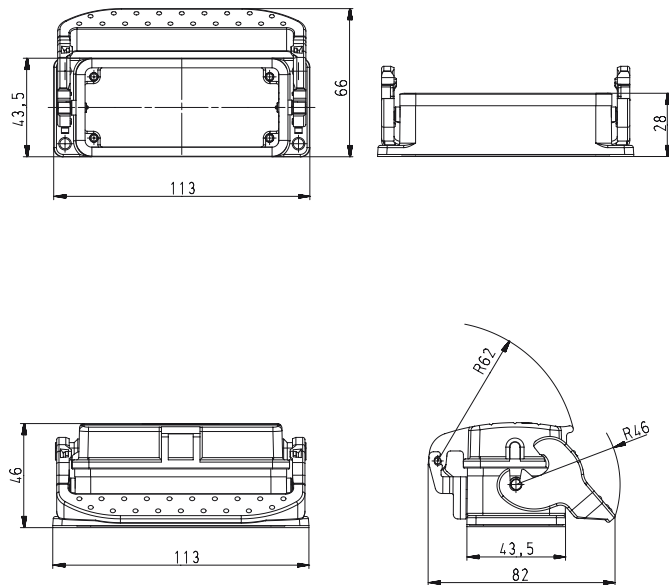
### Note:

In 2013 the design and order numbers of the revos housings will change, but the function of the housings will remain intact. In addition, a new flexible marking system will be available to you. In the transition phase you can continue to order with the existing part number. You can find more detailed information and a cross-reference list in our e-Shop and on our homepage.

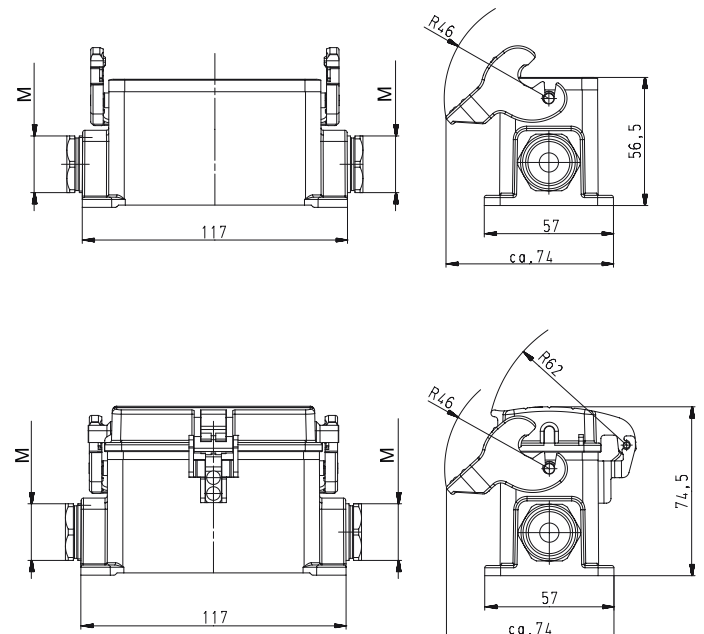
# Dimensions

## Bases

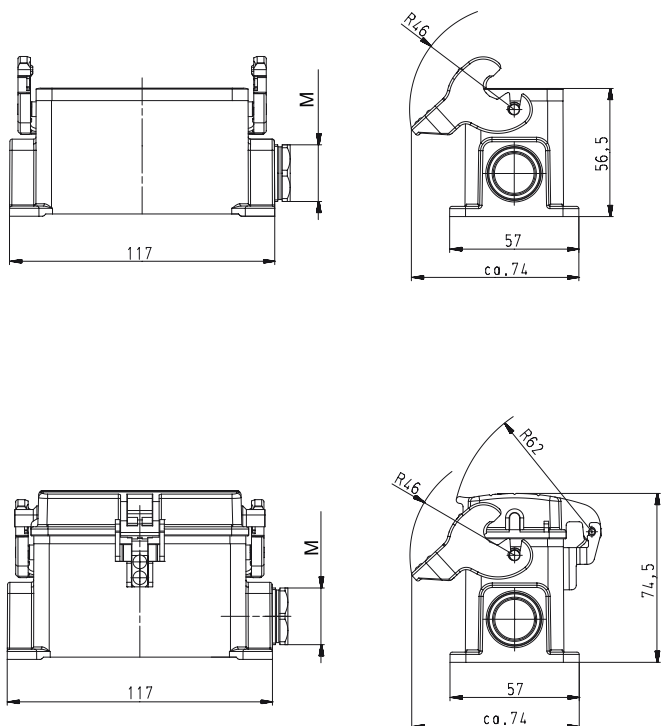
### open



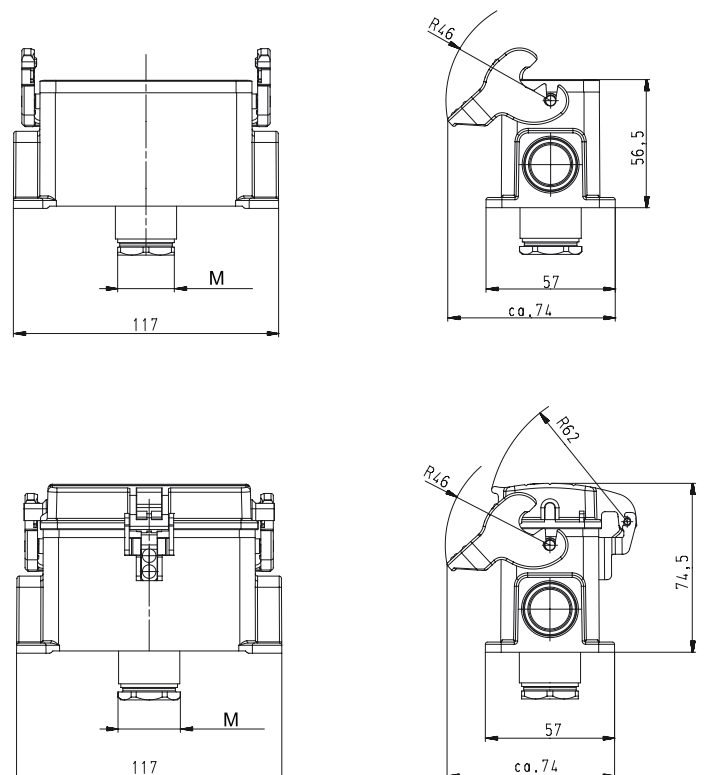
### closed, 2 cable glands



### closed, 1 cable gland



### closed, 1 cable gland, bottom





# 690 V Hoods, double locking lever Size 16

## 690 V Hoods Size 16



### Lateral cable entry



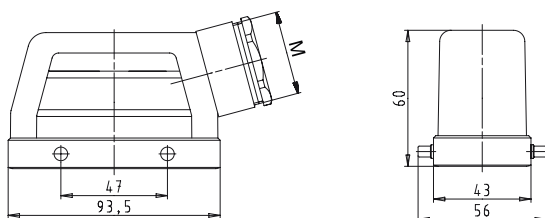
### Top cable entry



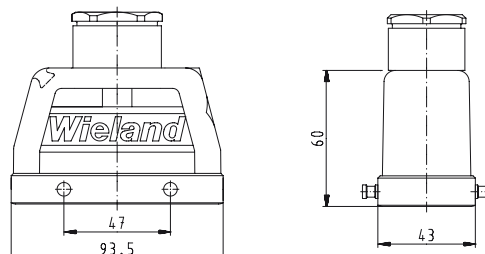
Description	Type	M	Part No.	P.U.
<b>690 V Hoods, size 16</b>				
<b>Lateral cable entry M25</b>				
with cable gland, IP54, $\rightarrow \varnothing \leftarrow$ 7.5 – 19 mm	BAS GOT GA 16 M25 69 A0	25	72.350.1635.0	1
with threaded collar	BAS GOT GA 16 M25 69 A1	25	72.350.1635.1	1
with intermediate support	BAS GOT GA 16 M25 69 A2	25	72.350.1635.2	1
with strain relief, IP54	BAS GOT GA 16 M25 69 A3	25	72.350.1635.3	1
<b>Lateral cable entry M32</b>				
with cable gland, IP54, $\rightarrow \varnothing \leftarrow$ 15 – 26.5 mm	BAS GOT GA 16 M32 69 A0	32	72.353.1635.0	1
with threaded collar	BAS GOT GA 16 M32 69 A1	32	72.353.1635.1	1
with intermediate support	BAS GOT GA 16 M32 69 A2	32	72.353.1635.2	1
with strain relief, IP54	BAS GOT GA 16 M32 69 A3	32	72.353.1635.3	1
<b>Top cable entry M25</b>				
with cable gland, IP54, $\rightarrow \varnothing \leftarrow$ 7.5 – 19 mm	BAS GOT GC 16 M25 69 A0	25	72.352.1635.0	1
with threaded collar	BAS GOT GC 16 M25 69 A1	25	72.352.1635.1	1
with intermediate support	BAS GOT GC 16 M25 69 A2	25	72.352.1635.2	1
with strain relief, IP54	BAS GOT GC 16 M25 69 A3	25	72.352.1635.3	1
<b>Top cable entry M32</b>				
with cable gland, IP54, $\rightarrow \varnothing \leftarrow$ 15 – 26.5 mm	BAS GOT GC 16 M32 69 A0	32	72.354.1635.0	1
with threaded collar	BAS GOT GC 16 M32 69 A1	32	72.354.1635.1	1
with intermediate support	BAS GOT GC 16 M32 69 A2	32	72.354.1635.2	1
with strain relief, IP54	BAS GOT GC 16 M32 69 A3	32	72.354.1635.3	1
<b>Technical data</b>				
Material metal/plastic	Die cast aluminum alloy			
Surface	silicon-free			
Locking levers at Multipole connectors	-			
Gasket at Multipole connectors	-			
<b>Degree of protection</b>				
with latched locking levers	IP54			
with appropriate cable glands	IP65			
Temperature range	-40 – +120 °C			
Description	Type	M	Part No.	P.U.
<b>Accessories</b>				
Cable gland IP68, plastic material, gray	Connection range 7 – 16 mm	25	Z5.507.1553.0	10
Cable gland IP68, nickel-plated brass	Connection range 11 – 18 mm	25	Z5.507.1521.0	10
Cable gland IP68, plastic material, gray	Connection range 10 – 21 mm	32	Z5.507.1753.0	10
Cable gland IP68, nickel-plated brass	Connection range 15 – 21 mm	32	Z5.507.1721.0	10
<b>Contact inserts</b>				
See the product matrix			Page 24–25	

## Dimensions

### Lateral cable entry



### Top cable entry



#### Note:

In 2013 the design and order numbers of the revos housings will change, but the function of the housings will remain intact. In addition, a new flexible marking system will be available to you. In the transition phase you can continue to order with the existing part number. You can find more detailed information and a cross-reference list in our e-Shop and on our homepage.

# 690 V Hoods, double locking lever Size 16XL

## 690 V Hoods Size 16XL

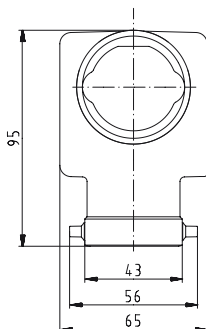
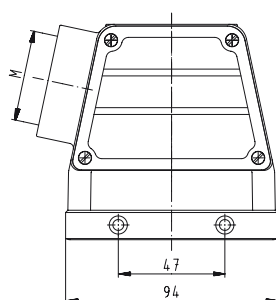
### Lateral cable entry with intermediate support



Description	Type	M	Part No.	P.U.
<b>690 V Hoods, size 16XL</b>	<b>Aluminum housing</b>			
<b>Lateral cable entry M40</b>				
with intermediate support	POW GOT GA 16 M40 69 A2	40	72.250.1635.2	1
<b>Technical data</b>				
Material	Die cast aluminum alloy			
Surface	silicon-free			
Locking levers	-			
Gasket	-			
<b>Degree of protection</b>				
with latched locking levers	-			
with appropriate cable glands	IP65			
Temperature range	-40 – +120 °C			
Description	Type	M	Part No.	P.U.
<b>Accessories</b>				
Cable gland IP68, plastic material, gray	Connection range 16 – 28 mm	40	Z5.507.1953.0	1
Cable gland IP68, nickel-plated brass	Connection range 19 – 27 mm	40	Z5.507.1921.0	1
<b>Contact inserts</b>				
See the product matrix			Page 24–25	

## Dimensions

### Lateral cable entry



# 690 V Hoods, double locking lever with Locking levers, Size 16

## 690 V Hoods Size 16



### Lateral cable entry



### Top cable entry



### Multipole connectors for cable-to-cable couplings



Description	Type	M	Part No.	P.U.
<b>690 V Hoods, size 16</b>				
<b>Aluminum housing</b>				
<b>Lateral cable entry M25</b>				
with cable gland, IP54, $\rightarrow \varnothing \leftarrow$ 7.5 – 19 mm	BAS GOT GD 16 M25 69 A0	25	72.355.1635.0	1
with threaded collar	BAS GOT GD 16 M25 69 A1	25	72.355.1635.1	1
with intermediate support	BAS GOT GD 16 M25 69 A2	25	72.355.1635.2	1
with strain relief, IP54	BAS GOT GD 16 M25 69 A3	25	72.355.1635.3	1
<b>Lateral cable entry M32</b>				
with cable gland, IP54, $\rightarrow \varnothing \leftarrow$ 15 – 26.5 mm	BAS GOT GD 16 M32 69 A0	32	72.358.1635.0	1
with threaded collar	BAS GOT GD 16 M32 69 A1	32	72.358.1635.1	1
with intermediate support	BAS GOT GD 16 M32 69 A2	32	72.358.1635.2	1
with strain relief, IP54	BAS GOT GD 16 M32 69 A3	32	72.358.1635.3	1
<b>Top cable entry M25</b>				
with cable gland, IP54, $\rightarrow \varnothing \leftarrow$ 7.5 – 19 mm	BAS GOT GF 16 M25 69 A0	25	72.357.1635.0	1
with threaded collar	BAS GOT GF 16 M25 69 A1	25	72.357.1635.1	1
with intermediate support	BAS GOT GF 16 M25 69 A2	25	72.357.1635.2	1
with strain relief, IP54	BAS GOT GF 16 M25 69 A3	25	72.357.1635.3	1
<b>Top cable entry M32</b>				
with cable gland, IP54, $\rightarrow \varnothing \leftarrow$ 15 – 26.5 mm	BAS GOT GF 16 M32 69 A0	32	72.359.1635.0	1
with threaded collar	BAS GOT GF 16 M32 69 A1	32	72.359.1635.1	1
with intermediate support	BAS GOT GF 16 M32 69 A2	32	72.359.1635.2	1
with strain relief, IP54	BAS GOT GF 16 M32 69 A3	32	72.359.1635.3	1
<b>Multipole connectors for cable-to-cable couplings M25</b>				
with cable gland, IP54, $\rightarrow \varnothing \leftarrow$ 7.5 – 19 mm	BAS GOT GC 16 M25 69 A0	25	72.352.1635.0	1
with cable gland, IP54, $\rightarrow \varnothing \leftarrow$ 7.5 – 19 mm	BAS GOT GK 16 M25 69 A0	25	72.372.1635.0	1
Locking levers and gasket				
with threaded collar	BAS GOT GC 16 M25 69 A1	25	72.352.1635.1	1
with threaded collar	BAS GOT GK 16 M25 69 A1	25	72.372.1635.1	1
Locking levers and gasket				
with strain relief, IP54	BAS GOT GC 16 M25 69 A3	25	72.352.1635.3	1
with strain relief, IP54	BAS GOT GK 16 M25 69 A3	25	72.372.1635.3	1
Locking levers and gasket				
<b>Technical data</b>				
Material	Die cast aluminum alloy			
Surface	silicon-free			
Locking levers	Handle: Polyamide, UL94-V0; stainless steel: V2A			
Gasket for Multipole connectors	NBR			
<b>Degree of protection</b>				
with latched locking levers	IP54			
with appropriate cable glands	IP65			
Temperature range	-40 – +120 °C			
Description	Type	M	Part No.	P.U.
<b>Accessories</b>				
Cable gland IP68, plastic material, gray	Connection range 7 – 16 mm	25	Z5.507.1553.0	10
Cable gland IP68, nickel-plated brass	Connection range 11 – 18 mm	25	Z5.507.1521.0	10
Cable gland IP68, plastic material, gray	Connection range 10 – 21 mm	32	Z5.507.1753.0	10
Cable gland IP68, nickel-plated brass	Connection range 15 – 21 mm	32	Z5.507.1721.0	10
<b>Contact inserts</b>				
See the product matrix			Page 24–25	

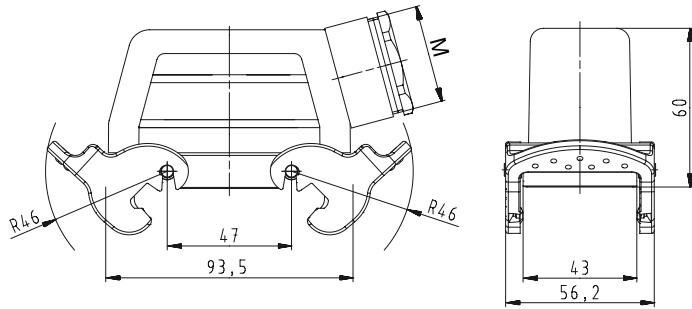
#### Note:

In 2013 the design and order numbers of the revos housings will change, but the function of the housings will remain intact. In addition, a new flexible marking system will be available to you. In the transition phase you can continue to order with the existing part number. You can find more detailed information and a cross-reference list in our e-Shop and on our homepage.

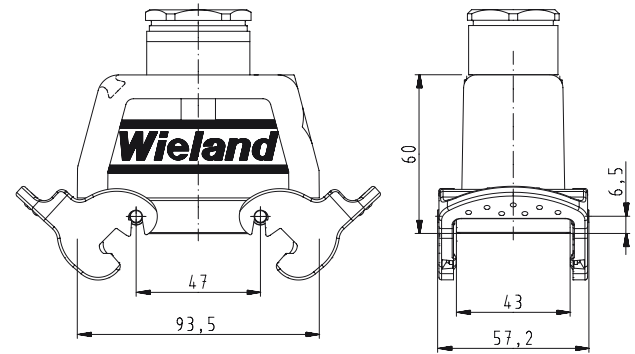
# Dimensions

## Hoods with Locking levers

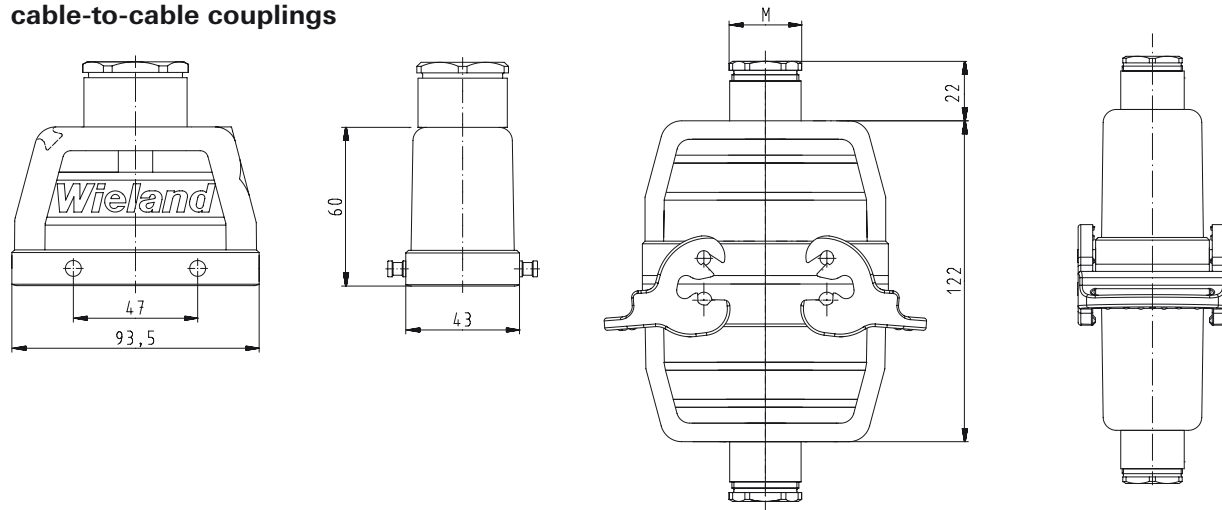
### Lateral cable entry



### Top cable entry



## Multipole connectors for cable-to-cable couplings



# 690 V Bases, double locking lever Size 16

## 690 V Bases, Size 16



### open

without cover  
with cover



### closed

1 cable gland, lateral  
cable entry

without cover  
with cover










### closed

1 cable gland, bottom

without cover  
with cover



Description	Type	M	Part No.	P.U.
<b>690 V Bases, size 16</b>	<b>Aluminum housing</b>			
<b>Open-bottom base</b>				
without cover	BAS GUT GA 16 69 A		72.320.1628.0	1
with cover	BAS GUT GE 16 69 A		72.325.1628.0	1
<b>Closed-bottom base</b>				
<b>2 cable glands, 2 x M25</b>				
<b>without cover</b>				
with cable gland, IP54,  7.5 – 19 mm	BAS GUT GB 16 M25 69 A0	25	72.330.1635.0	1
with threaded collar	BAS GUT GB 16 M25 69 A1	25	72.330.1635.1	1
<b>with cover</b>				
with cable gland, IP54,  7.5 – 19 mm	BAS GUT GF 16 M25 69 A0	25	72.340.1635.0	1
with threaded collar	BAS GUT GF 16 M25 69 A1	25	72.340.1635.1	1
<b>1 cable gland, left, 1 x M25</b>				
<b>without cover</b>				
with cable gland, IP54,  7.5 – 19 mm	BAS GUT GC 16 M25 69 A0	25	72.331.1635.0	1
with threaded collar	BAS GUT GC 16 M25 69 A1	25	72.331.1635.1	1
<b>with cover</b>				
with cable gland, IP54,  7.5 – 19 mm	BAS GUT GG 16 M25 69 A0	25	72.341.1635.0	1
with threaded collar	BAS GUT GG 16 M25 69 A1	25	72.341.1635.1	1
<b>1 cable gland, right, 1 x M25</b>				
<b>with cover</b>				
with cable gland, IP54,  7.5 – 19 mm	BAS GUT GH 16 M25 69 A0	25	72.342.1635.0	1
with threaded collar	BAS GUT GH 16 M25 69 A1	25	72.342.1635.1	1
<b>1 cable gland, bottom, 1 x M25</b>				
<b>without cover</b>				
with cable gland, IP54,  7.5 – 19 mm	BAS GUT GD 16 M25 69 A0	25	72.333.1635.0	1
with threaded collar	BAS GUT GD 16 M25 69 A1	25	72.333.1635.1	1
<b>with cover</b>				
with cable gland, IP54,  7.5 – 19 mm	BAS GUT GI 16 M25 69 A0	25	72.343.1635.0	1
with threaded collar	BAS GUT GI 16 M25 69 A1	25	72.343.1635.1	1
<b>Technical data</b>				
Material	Die cast aluminum alloy			
Surface	silicon-free			
Locking levers	Handle: Polyamide, UL94-V0; stainless steel: V2A			
Gasket	NBR			
<b>Degree of protection</b>				
with latched locking levers	IP54			
with appropriate cable glands	IP65			
Temperature range	-40 – +120 °C			
Description	Type	M	Part No.	P.U.
<b>Accessories</b>				
Cable gland IP68, plastic material, gray	Connection range 7 – 16 mm	25	Z5.507.1553.0	10
Cable gland IP68, nickel-plated brass	Connection range 11 – 18 mm	25	Z5.507.1521.0	10
<b>Contact inserts</b>				
See the product matrix			Page 24–25	

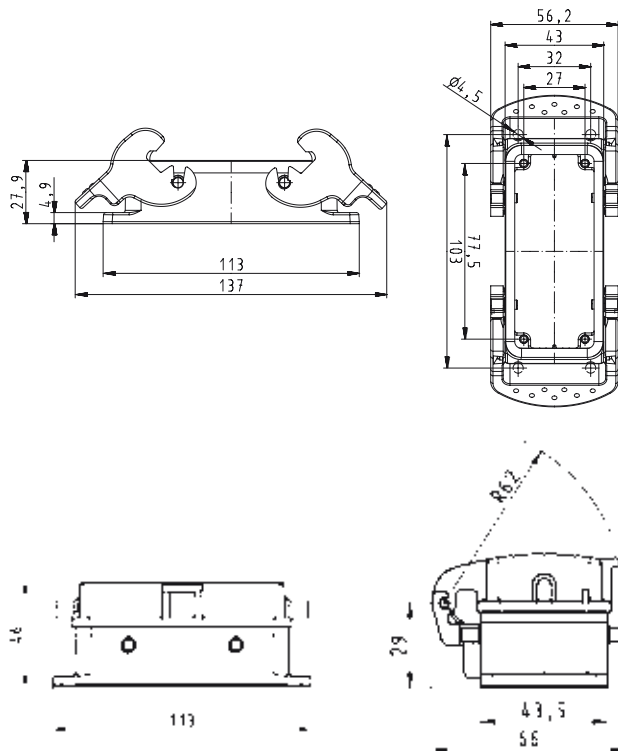
### Note:

In the course of 2013, the design and order number of the housing will change. But the function of the housing will, of course, remain intact. Additionally, a new, flexible marking system will be available to you. In the transition phase, you can continue to order with the existing number. You can find more exact information and cross-reference lists in our e-Shop and on our homepage.

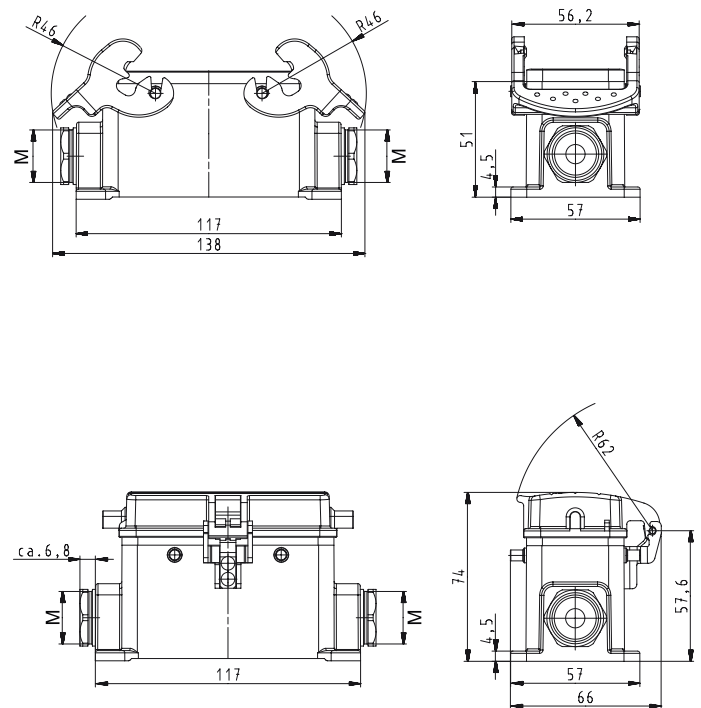
# Dimensions

## Bases

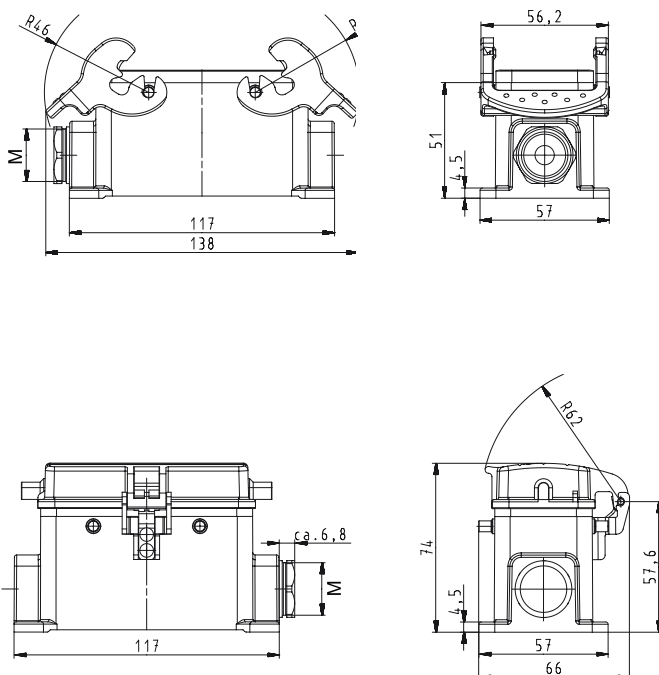
### open



### closed, 2 cable glands



### closed, 1 cable gland, lateral cable entry



### closed, 1 cable gland, bottom

